

---

# Kubuntu Docs

*Release 22.04*

**Aaron Honeycutt**

**Mar 06, 2022**



## INSTALLATION

<b>1</b>	<b>Welcome to Kubuntu</b>	<b>1</b>
<b>2</b>	<b>The Kubuntu Philosophy</b>	<b>3</b>
<b>3</b>	<b>What is Linux?</b>	<b>5</b>
<b>4</b>	<b>What is KDE?</b>	<b>7</b>
<b>5</b>	<b>Thank You!</b>	<b>9</b>
<b>6</b>	<b>Indices and tables</b>	<b>49</b>



## WELCOME TO KUBUNTU



Kubuntu is a user-friendly Linux-based operating system that use the KDE Plasma Desktop. With a predictable six-month release cycle as part of the Ubuntu project, Kubuntu is the Linux distribution for everyone.

Kubuntu includes more than 1,000 default packages (applications or utilities) and has access to more than 64,000 other packages to suit your needs. Kubuntu is based on the Linux kernel and includes the core Ubuntu applications as well as KDE software. Kubuntu's core applications include software for the most common needs, like:

- Browsing the web.
- Personal Information Manager which includes email.
- Office applications

- Playing multimedia files.
- Plus much more!

## **THE KUBUNTU PHILOSOPHY**

- Kubuntu will always use the solid base of the Ubuntu project, plus the latest from the KDE project. As part of the Ubuntu project and community, Kubuntu will continue to use the infrastructure and support that the Ubuntu project offers. We will strive to be the best KDE based Linux distribution available.
- Kubuntu will always be free of charge. There is no extra fee for an enterprise edition; we make our best work available to everyone on the same free terms.
- Kubuntu will always include the best translations and accessibility infrastructure that the free software community has to offer, to make Kubuntu usable by as many people as possible.
- Kubuntu will always be committed to the principles of free software and open source development; we shall encourage people to use free and open source software, improve it, and pass it on.





## WHAT IS LINUX?

Linux is an operating system kernel that resembles the Unix operating system. The kernel is the main software required for any operating system, providing a communication bridge between hardware and software. Linux has become a leading element of the worldwide movement to embrace free and open source software. The term “GNU/Linux” is a way of referring to operating systems based on the Linux kernel combined with parts from the [GNU Project](#).



## **WHAT IS KDE?**

KDE is an international technology community that creates and supports free software for desktop and portable computing. Among *KDE*'s products are a modern desktop system for Linux and Unix platforms, comprehensive office productivity and groupware suites, as well as hundreds of software applications in various categories including internet and web applications, multimedia, entertainment, education, graphics, and software development. KDE software is translated into more than 65 languages and is built for ease of use with modern accessibility principles in mind. KDE's full-featured applications run natively on Linux, BSD, Solaris, Windows, and macOS. The Plasma Desktop is the default desktop for Kubuntu.



THANK YOU!

The entire Kubuntu team thanks you for choosing Kubuntu!

**Authors** Kubuntu Team

**Version** 22.04.0 ; Released: TBA

Contents:

## 5.1 Installation

### 5.1.1 Why try Kubuntu?

There are many good reasons to install Kubuntu! Some of them include:

- Kubuntu makes your PC friendly.
- Kubuntu is an operating system built by a friendly worldwide team of expert developers. It contains all the applications you need: web browser, office suite, media apps, instant messaging, and many others. For a list of the included software, see the [Software](#) page.
- Kubuntu is a free, open-source alternative to Windows and macOS.
- Easily install beside, or instead of, Windows.

### 5.1.2 Preparing the Installation media

Getting the ISO(Disc Image):

Download it though [Get Kubuntu](#).

#### Checking the SHA256SUM

Doing this will make sure your download completed fully and has given you a fully working ISO to boot and perhaps later install from.

### From Windows 10

Microsoft Windows does not have any built-in tools for SHA256SUM but they do provide some [decent documentation](#) and a tool for checking the SHA256SUM. How-To-Geek also provides some [reading material](#) if you want to understand the technology behind SHA256SUM if you like.

### From macOS

Open the Terminal app, then navigate to the directory where the ISO is saved. Run:

```
sha256 -r kubuntu-22.04-desktop-amd64.iso
```

And compare the output to the hashes page for the ISO file.

### From Ubuntu Linux

The first thing to do is to make sure you're in the directory with the .iso file (most likely in the Downloads directory). For more complex use of SHA256SUM check this [out](#). Then running the command 'md5sum':

```
sha256 kubuntu-22.04-desktop-amd64.iso
```

## Flashing the installation media

### Windows 10 and macOS

For a GUI (Graphic User Interface) we use [Etcher](#). The website will detect your OS and recommend a download version, it is recommended to use that version. Once it is installed (if you use the Installer for Windows only) open the application and follow these steps:

1. Select the ISO file using the 'Flash from file' option
2. Double left-click the ISO file which is usually in your Downloads folder
3. Use the 'Select target' option to select your flash drive
4. Then left-click the 'Flash!' button

**Warning:** Pay special attention when selecting the right flash drive under 'Drive' in case you have more than one flash drive connected.

### Existing Linux Installs

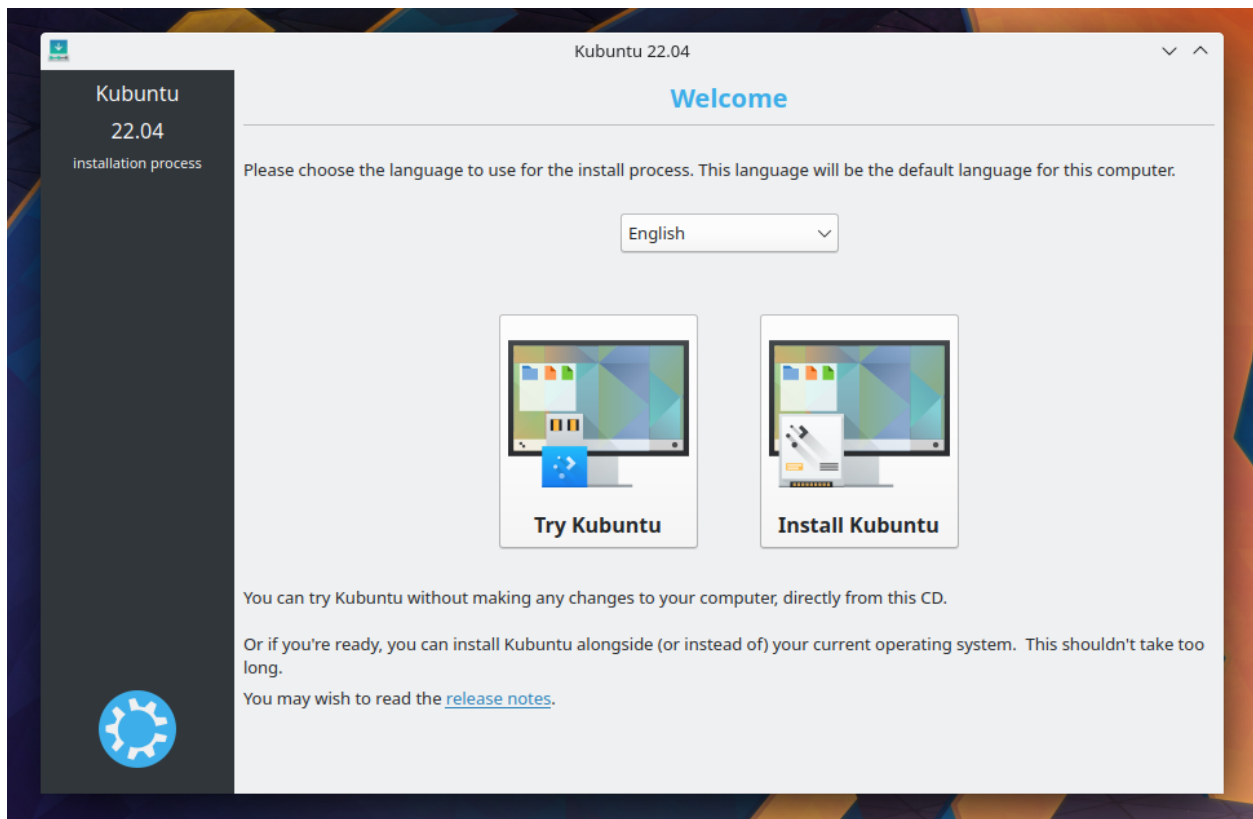
Since Etcher is a cross-platform application we can use it in Kubuntu as well so download the version that the [Etcher](#) website recommends as well. Though we will need to do the following:

1. Open your File Manager (Dolphin on Plasma distros and Files on GNOME distros)
2. Right-click the .zip file
3. Extract it using the 'Extract archive here'
4. Double left-click the new .AppImage file

5. Left-click the 'Execute' button in the new window

### 5.1.3 Install Process

**Note:** You will need to press a special key on the keyboard in order to boot from your chosen Installation Media. Ex: Esc, F2, F10, F12, or Del it all depends on the OEM(Original Equipment Manufacturer)



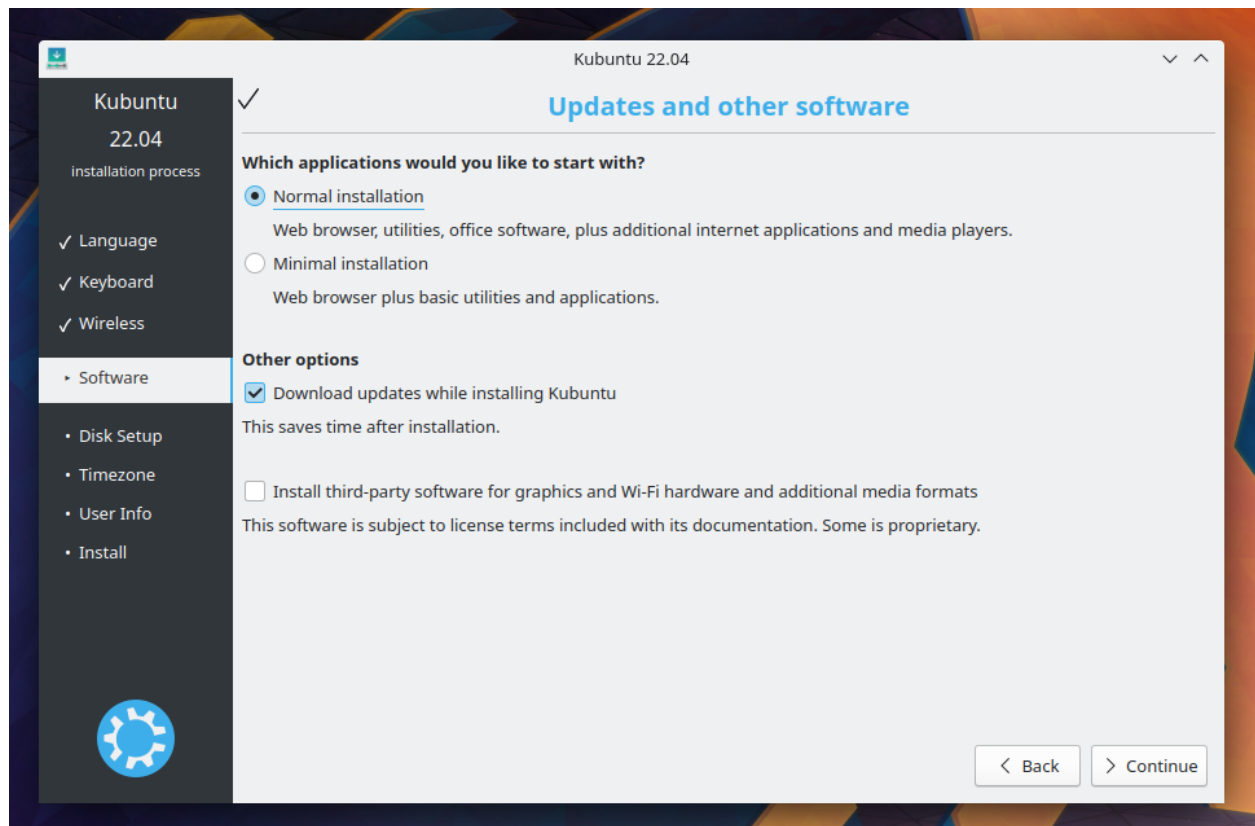
When the installer starts you will see these options:

- Try out Kubuntu without changing anything on your computer
- Install Kubuntu on your computer.

### Prepare

For the best result, ensure that:

- Your computer has enough room for Kubuntu and your data - your songs, pictures, videos, and documents.
- Your computer is connected to the Internet so that you can download updates and third-party software as Kubuntu is installing.



Include this third-party software: includes software that either does not follow the Open Source model or the [Ubuntu Philosophy](#), but is safe for use on your system.

Download updates while installing: will ensure that you have the latest bug and security fixes included and applied once the installation is complete.

### Disk Setup

This is where you choose how to organize your hard drive. This step is the most complicated and consequential in the entire install process, so take your time.

---

**Note:** You will be able to change your mind and go back until the Install Now button is clicked.

---

The following sections are some possible installation scenarios you might choose. Each of these choices points to a page or series of pages with more details. For each option (except Manual), the installer asks which hard drive to use. After choosing, you will see a before and after layout on that hard drive.

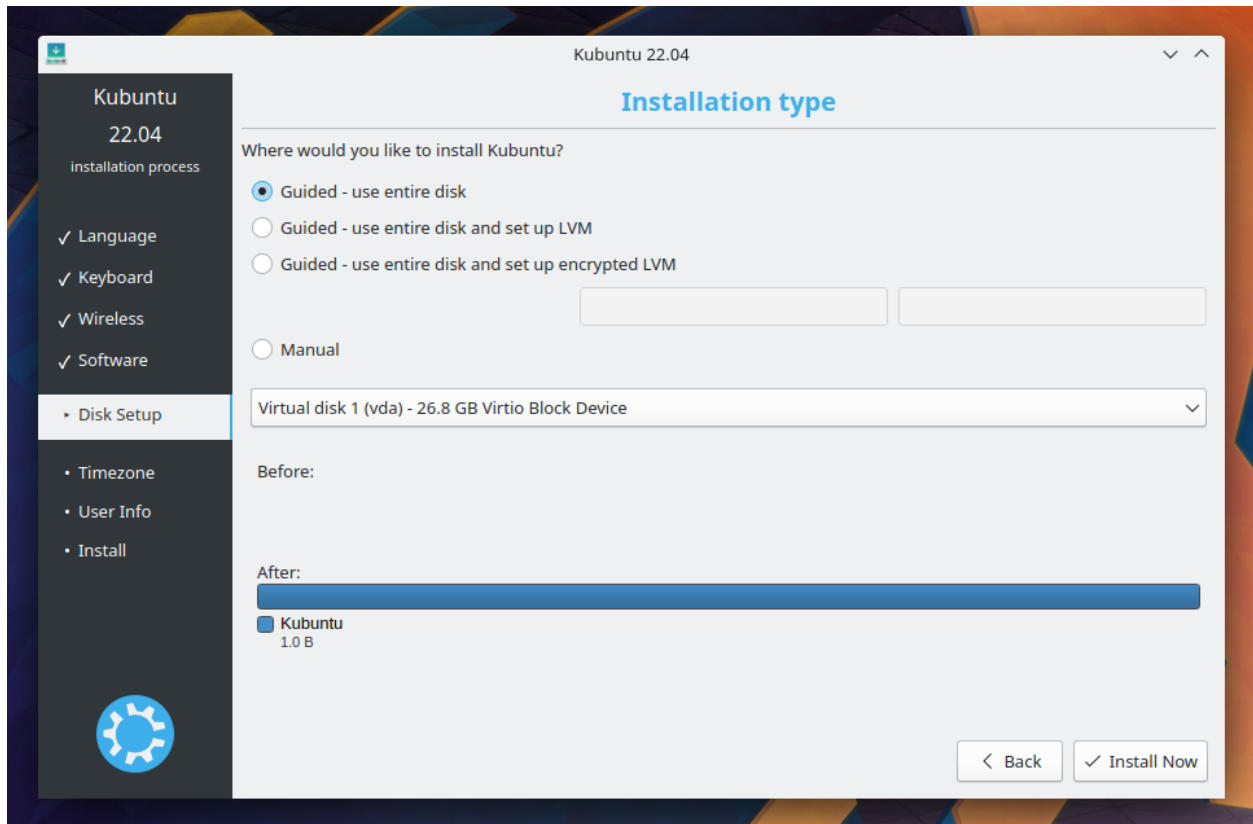


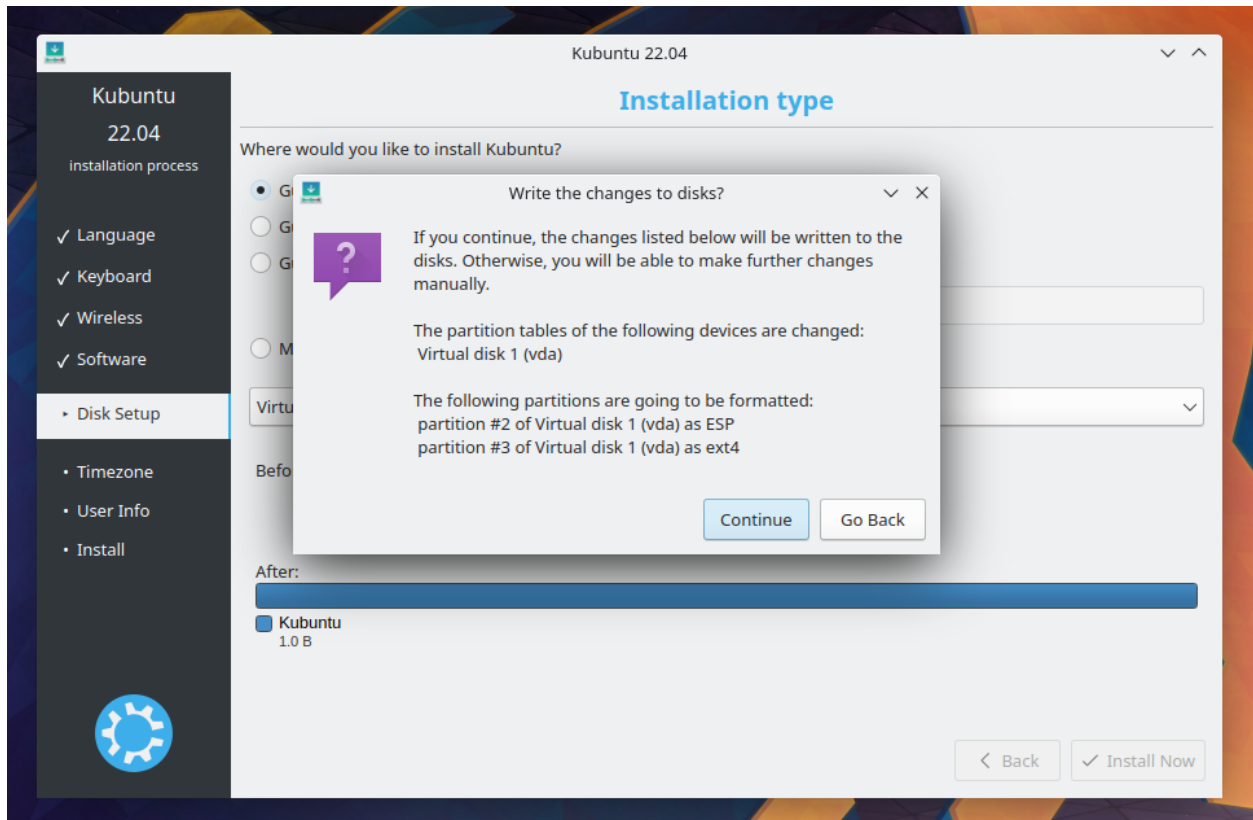
## Resize

This will resize the partitions for you and install Kubuntu on the free space. With this option you can create what is called a dual-boot and choose which OS to boot into at startup.

**Note:** This is available only if at least 25GB can be freed.

## Use entire disk



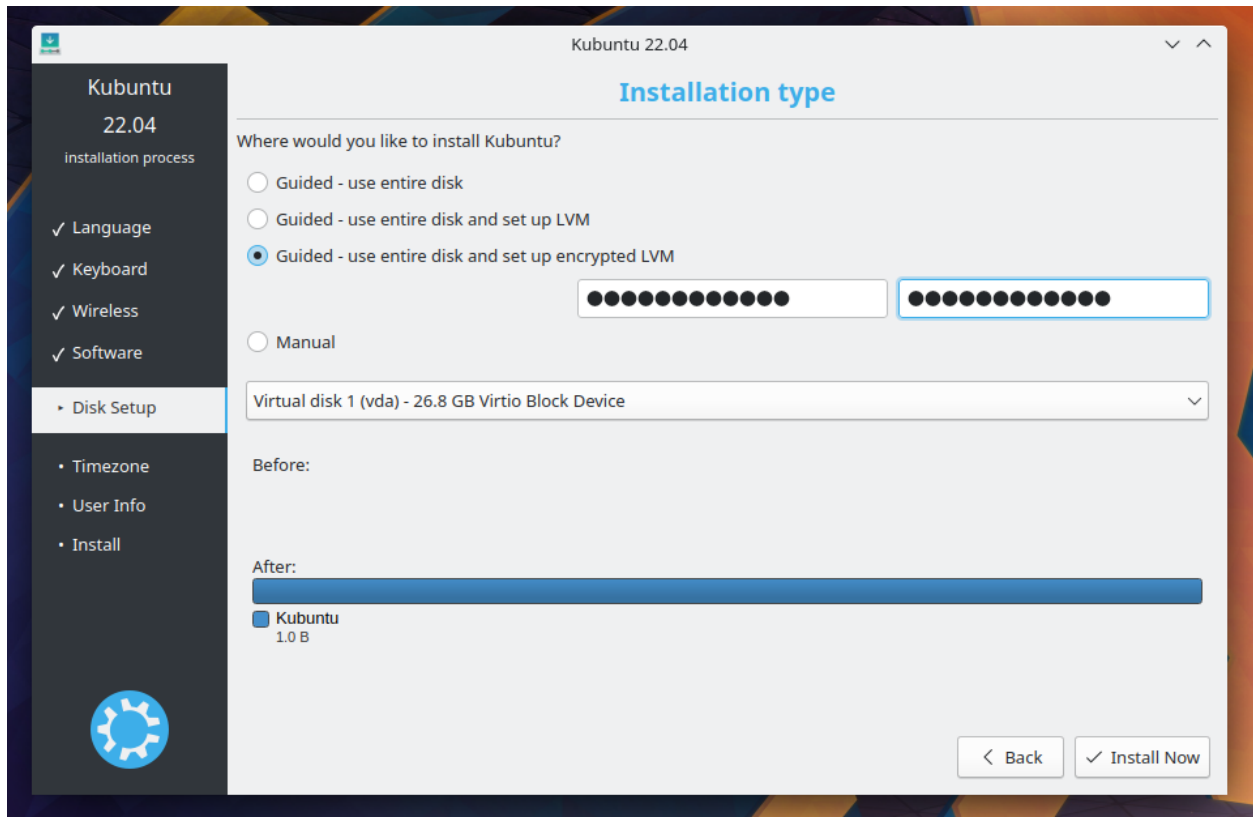


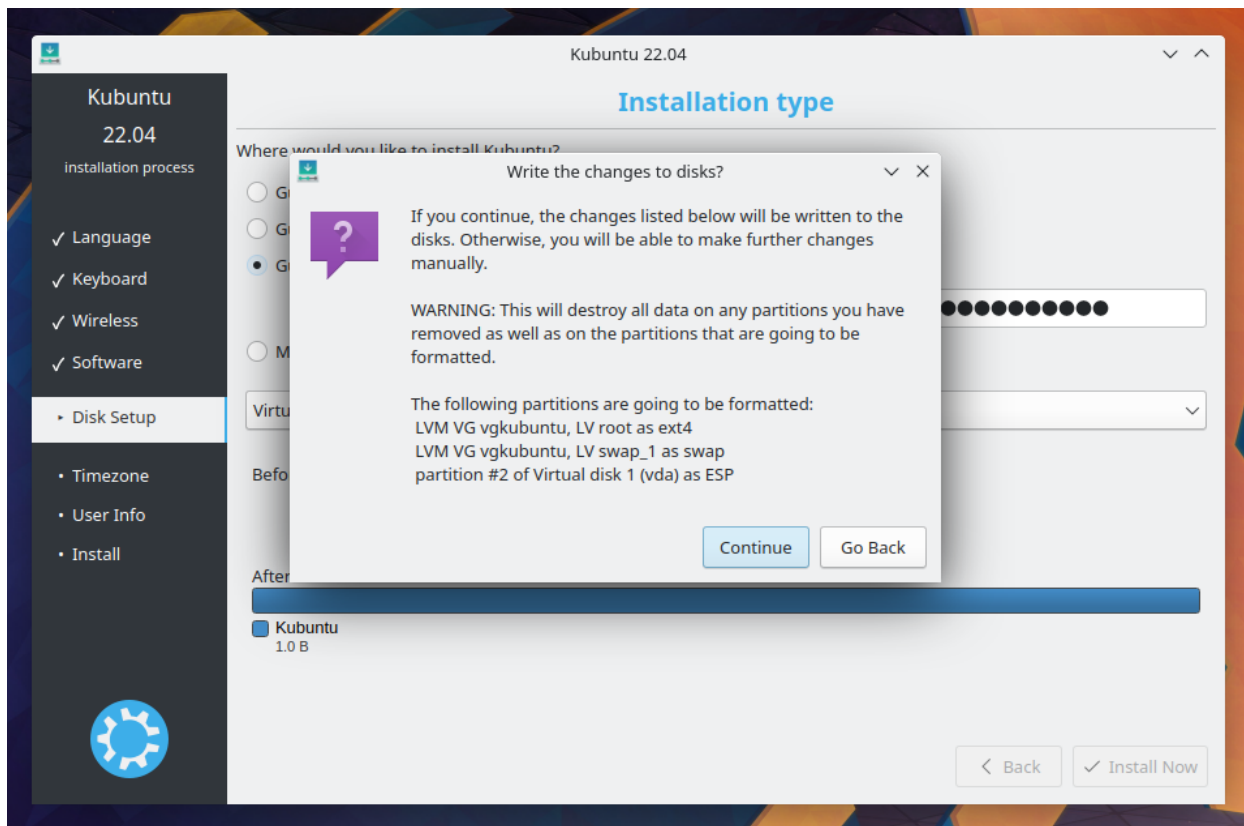
**Warning:** This will wipe all your data.

## Use entire disk and set up LVM

More about [LVM](#)

## Use entire disk and set up encrypted LVM





**Warning:** This will wipe all your data.

More about [encrypted file systems](#)

## Manual

When using Manual to set up your system as you would like it, keep these thoughts in mind:

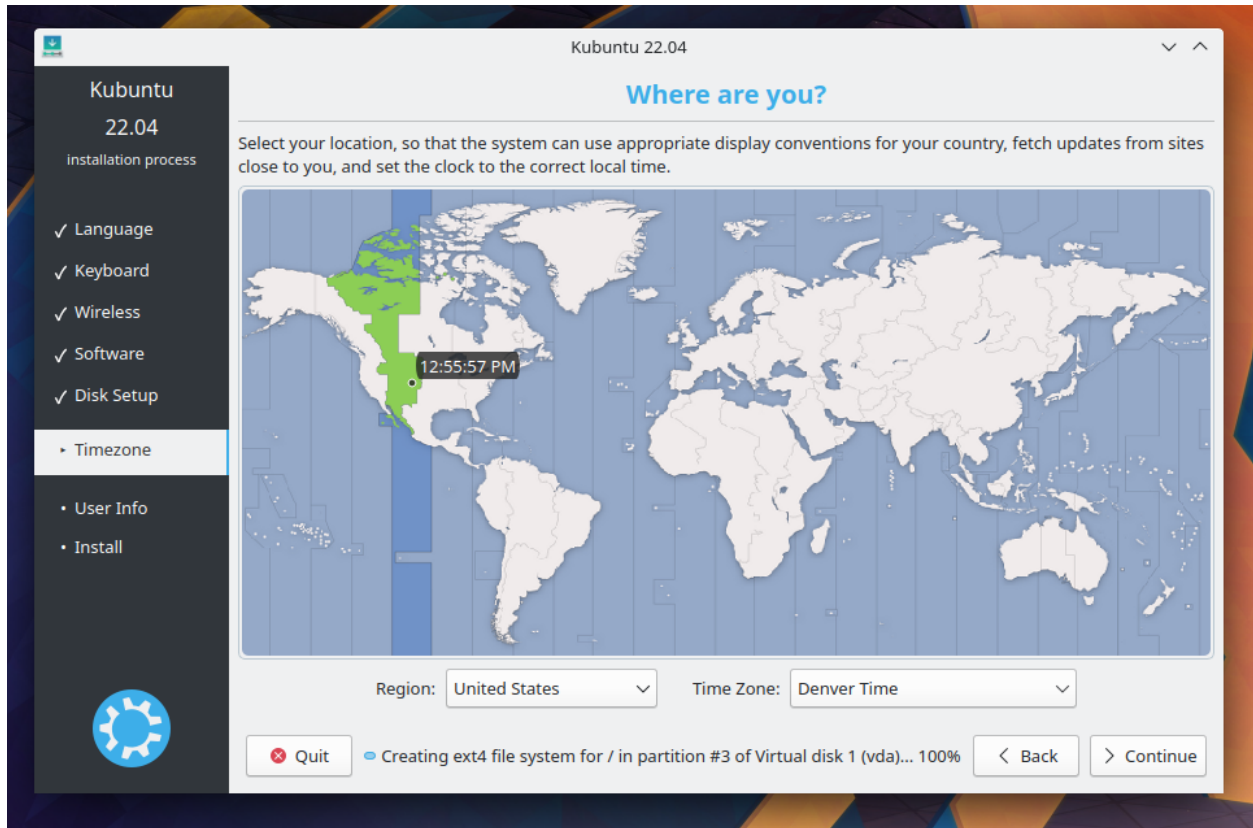
- The root ( / ) directory needs at least 25 GBs of space.
- The home ( /home ) directory needs as much space as you will need for your files, music, pictures and documents. So it is best to use the remaining space for the home partition, unless you have going to dual boot.
- Swap space of at least half of the available RAM is recommended. For instance, with 8 GBs, make the swap with at least 4 GBs.

**Note:** If you have a Windows 8 sticker on your machine you might need to make a separate EFI partition with a FAT32 filesystem.

For more detailed information regarding the Disk Setup of a Linux system you can check the [DiskSpace](#) page.

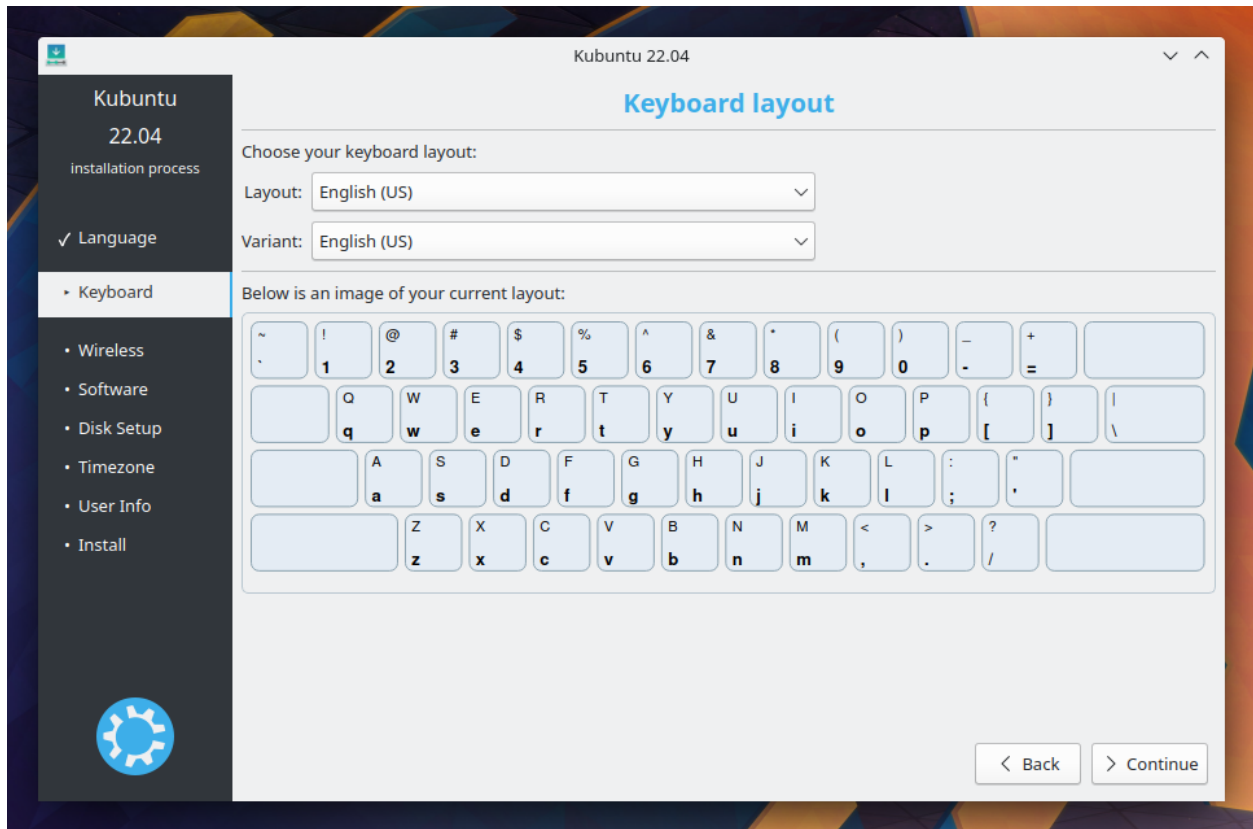
## Timezone

During this step you get to pick the Region where you live and then the Timezone of the location in that Region. An example would be that I live in Denver, so my Region is North America and my Timezone is MST.



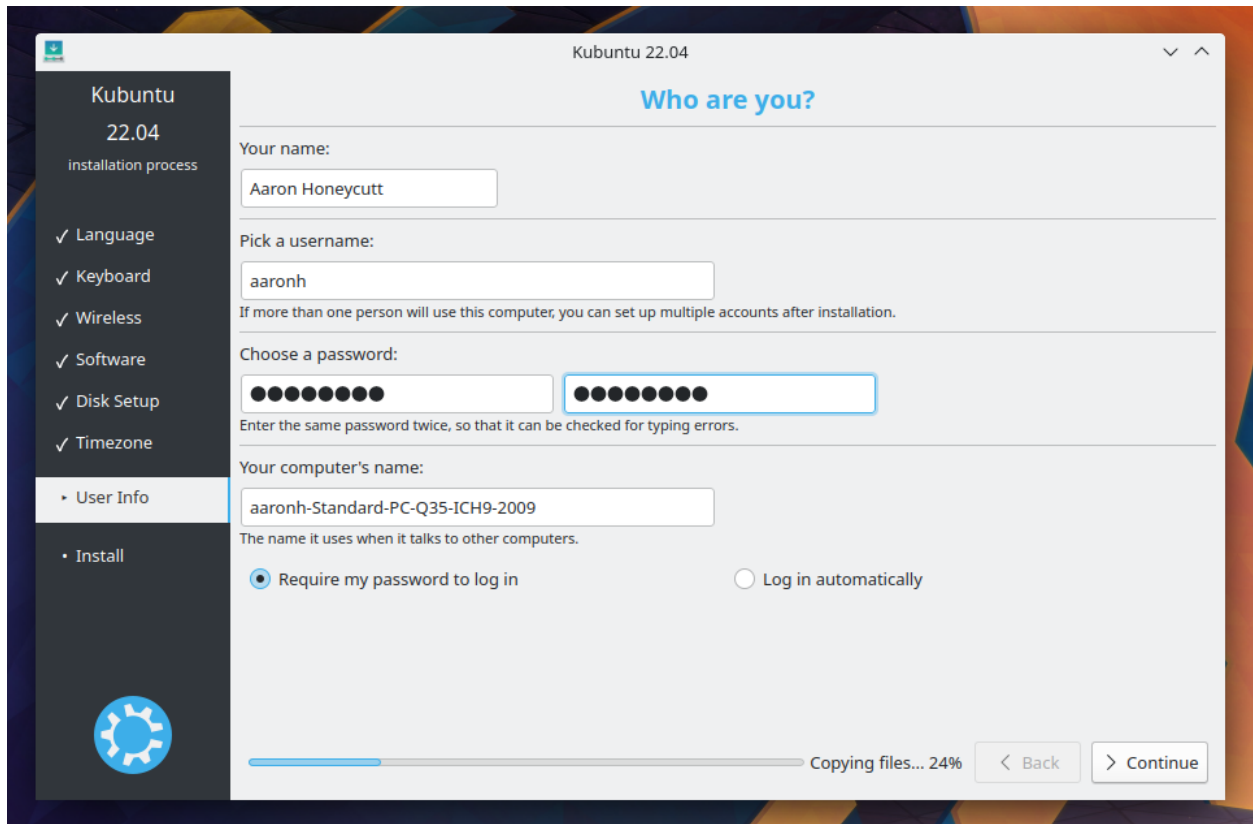
## Keyboard

This is the step that will set up your keyboard's language and, if the language has it, a different version of the language. For example, there is a Cherokee American English setting as well as different setups with special keys used in certain countries; in Kubuntu we try to make the system easy for everyone!



### User Info

At this step of the installation you will be putting in user information like your name, username, and password. The password will be your key to logging into your new installation as well as installing new software, updating your system, and more, so keep it written down somewhere!



## 5.2 Desktop Guide

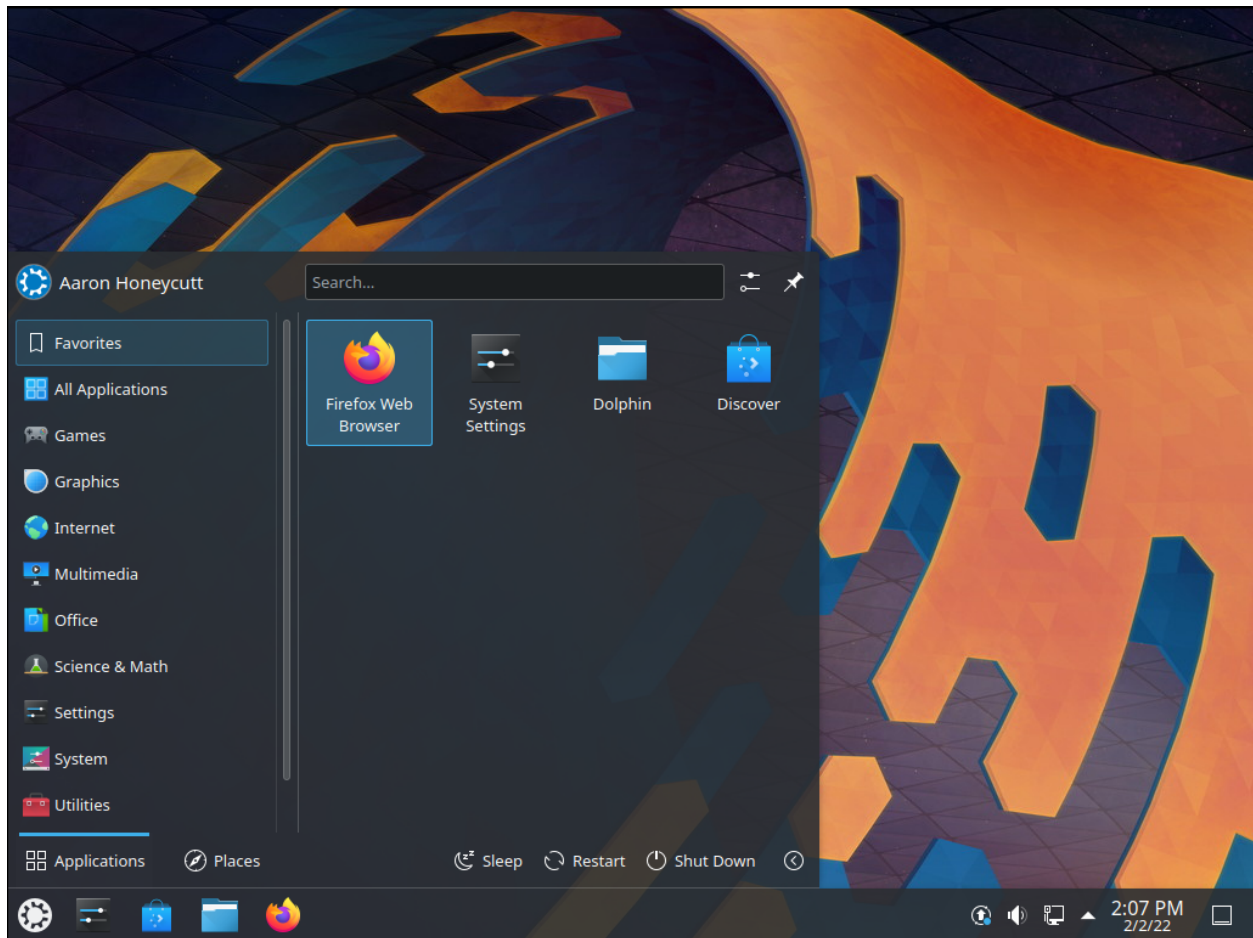
Contents:

### 5.2.1 Basic

This section of the manual will cover the components available within Kubuntu to meet your desired functionality and make Kubuntu your own.

## Launchers

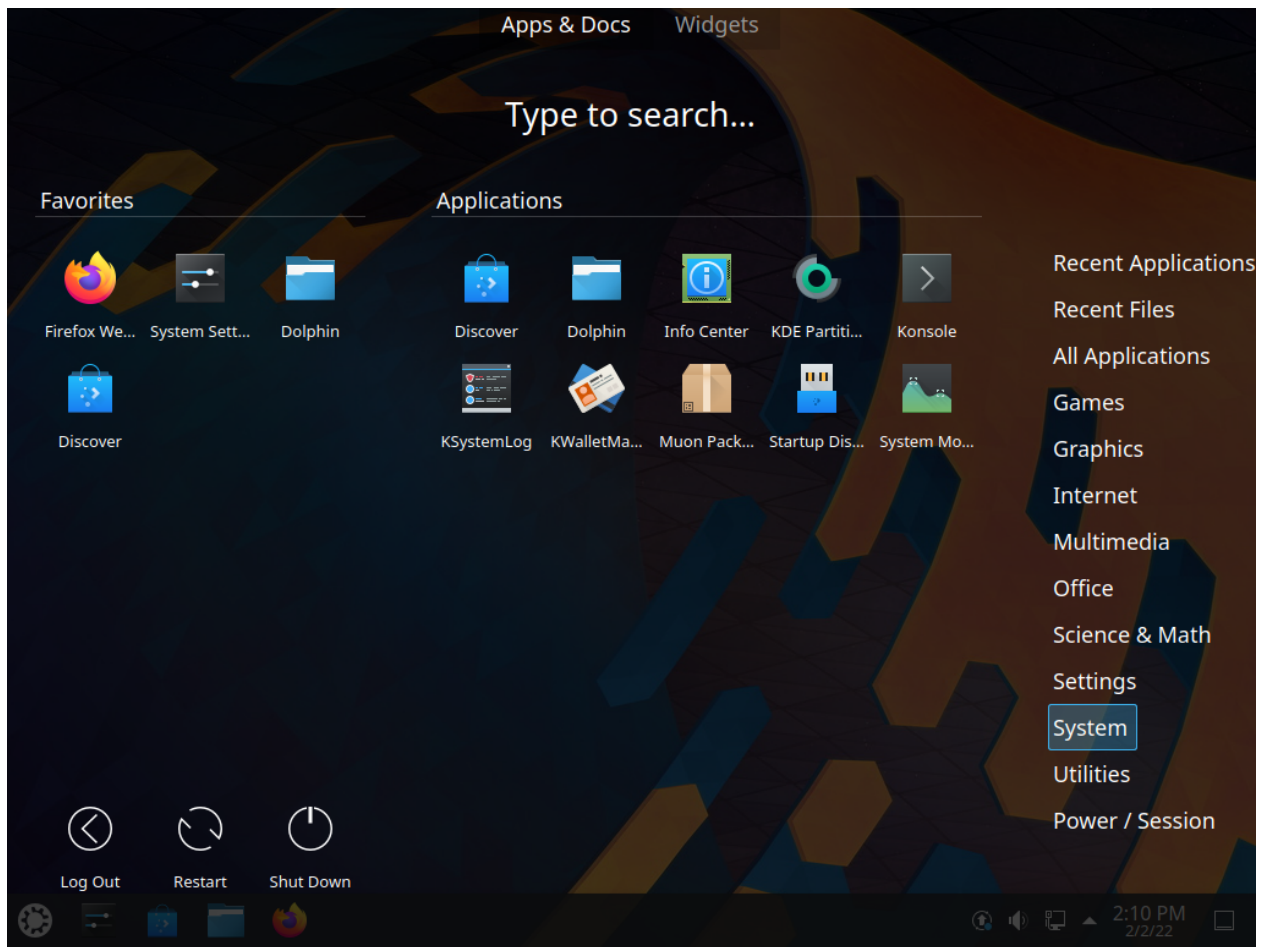
### Kickoff



As a KDE distribution, Kubuntu uses Kickoff Launcher by default, it can be compared with the ‘Start Menu’ in Windows (pre Windows 8). The icon to launch Kickoff is on the bottom left very much like Windows 7. For more information on how to use and customize it, see the [Kickoff page](#).

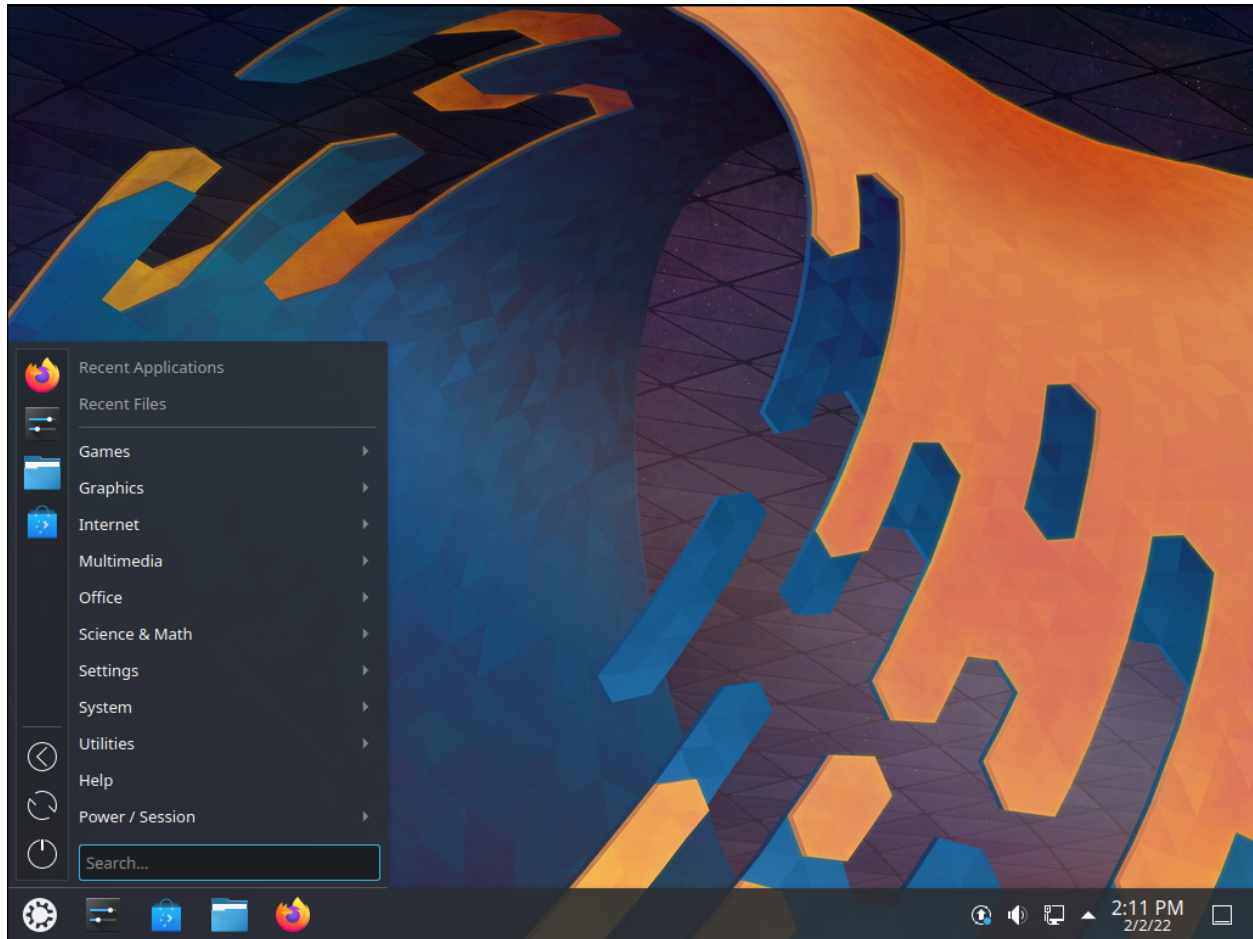


## Application Dashboard



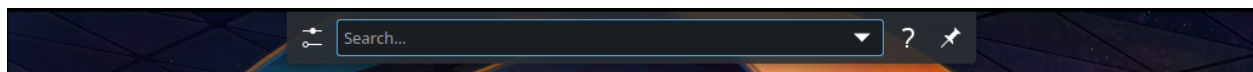
Taken from the old Plasma Netbook interface we have the Application Dashboard which is for users with smaller screens such as netbooks, small laptops or tablets.

## Application Menu



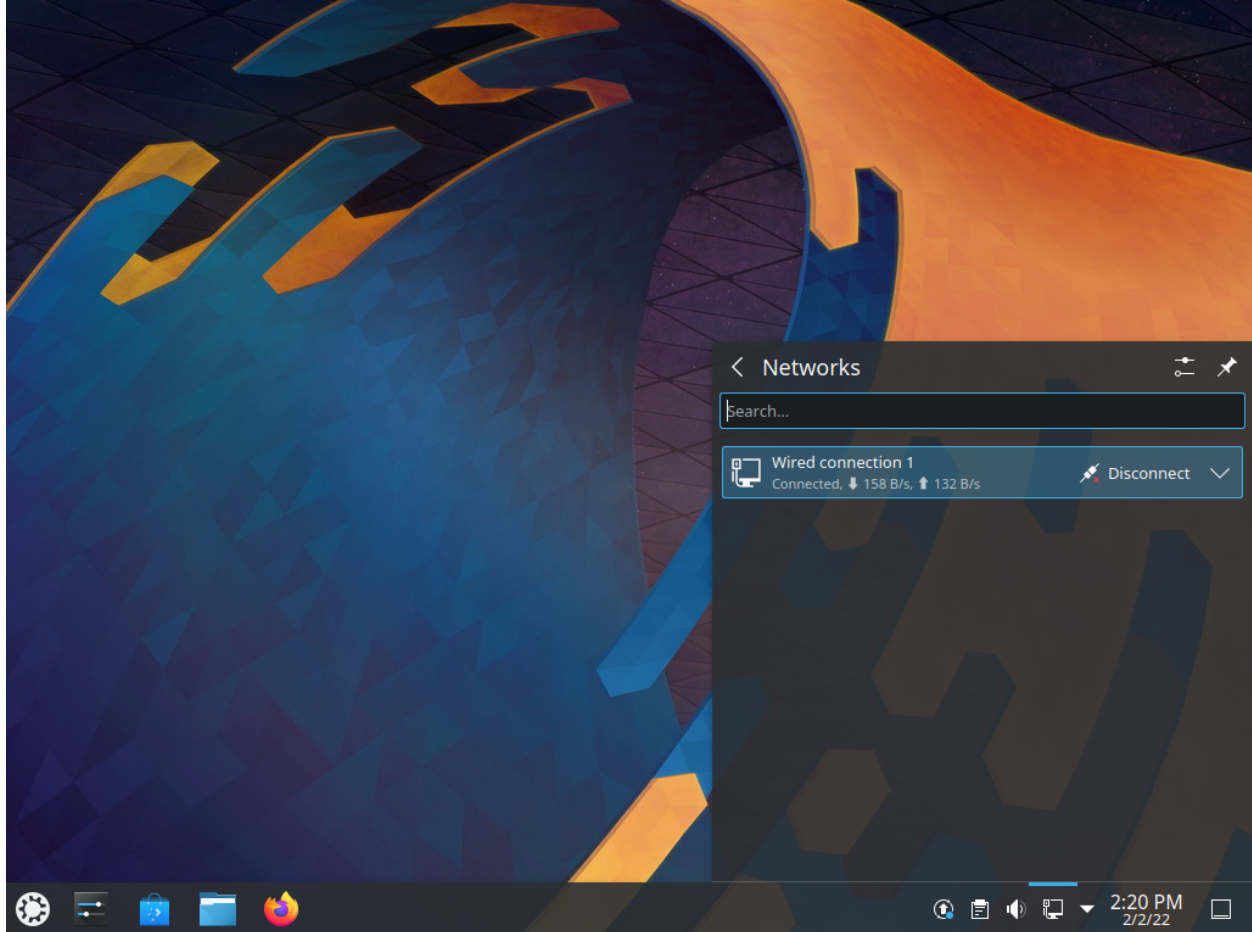
The Application Menu is like the Application Launcher but more compact.

## KRunner



Like any the above launchers, KRunner is a launcher, but it does a lot more than just launching applications. Usually KRunner is accessed by pressing Alt + Space. For more information on what it can do, see the [KRunner page](#).

## Networking



### Wired

In most cases the wired network connection will simply work without any changes to the default Kubuntu configuration. Wired network connections are selected as default when they are available.

### Wireless

Most Wireless cards are supported out of the box by Kubuntu. However, in some cases the Wireless network device may have a restricted driver in order to operate. The best way to check this is to open the ‘Driver Manager’ application. To open this program use your launcher of choice or KRunner to search for ‘Driver Manager’. If the device needs a restricted driver, then ‘Driver Manager’ can help with selecting, installing, and activating the proper driver. Once this is all handled, the system will need to be rebooted. For more information on troubleshooting Wi-Fi on your system, see [Wireless troubleshooting](#).

*Basic*

## 5.2.2 Advanced

This section covers the basics of configuring Kubuntu to suit your needs. One of the strengths of the *KDE* philosophy is the focus on control of just about every aspect of the desktop environment. Wallpapers, themes, widgets, color schemes, splash screens, and more; the options for customization are endless.

KDE-Look is the number one location to find customized settings for the *KDE* Plasma desktop. Some of the applications even allow direct connections to KDE-Look to download a new configuration or image.

### Global Themes

Kubuntu allows themes to be changed easily. To change your global theme follow these steps:

1. Open System Settings
2. Left-click ‘Global Theme’
3. Now choose from the list of installed themes
4. Pick from the default choices that are installed, or left-click the ‘Get New Global Themes...’ button for more choices

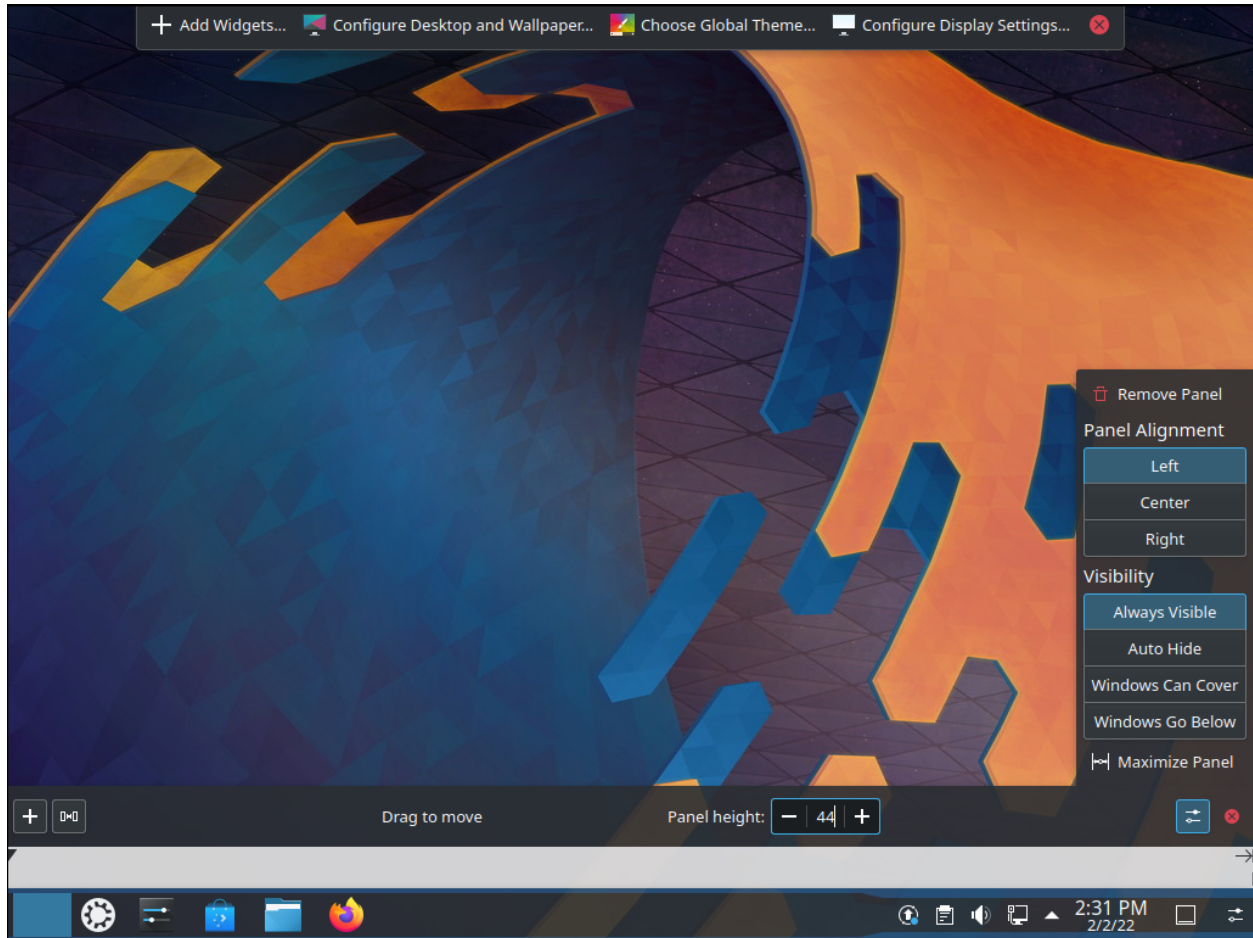
### Plasma Styles

1. Open System Settings
2. Left-click ‘Plasma Style’
3. Now choose from the list of installed themes
4. Pick from the default choices that are installed
  - Left-click the ‘Get New Plasma Styles...’ button for more choices
  - Left-click the ‘Install from File...’ button to install from a local file

### Plasmoids

Plasmoids (also called Widgets) can be added by right-clicking the desktop and selecting Add Widgets..., which will bring up a list of Widgets. For more information, see [Plasma Widgets](#).

## Panel



By right-clicking on the desktop once again, you can select Add Panel to get more panels. You can left-click the button on the far right side of the panel to alter the properties of the panel, like changing its height or width or adding Widgets, for example. For more information, see [Plasma Panels](#).

## Activities

Activities are specific and exclusive to KDE. As such they're often underutilised and misunderstood. In this section we're going to explore what KDE Activities are, how to set them up, and how to use them.

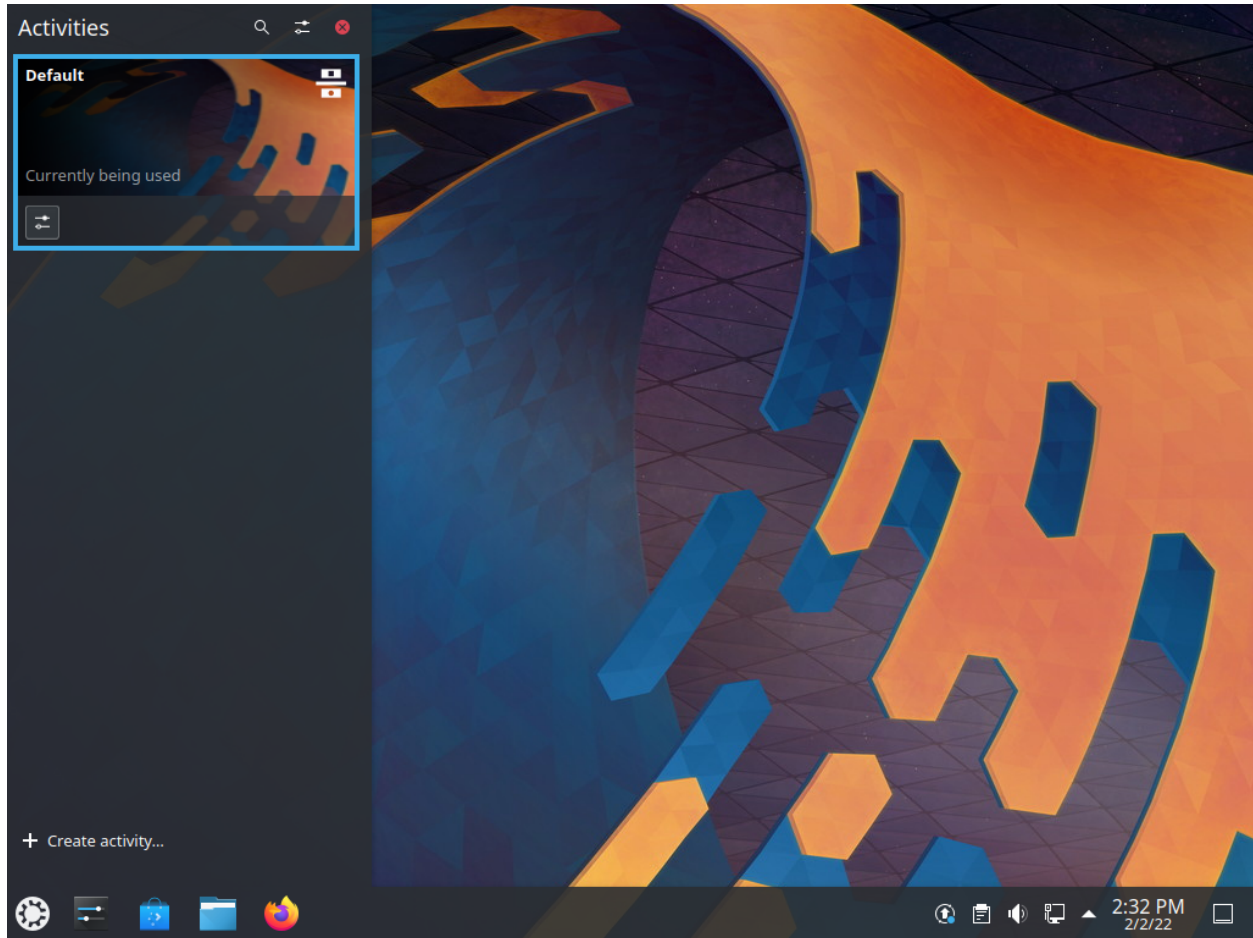
Think for a moment about your average day working on your PC. It will often traverse different activities. For example doing email and researching things on the internet, perhaps developing some documents, working on a piece of software, writing your thesis in LaTeX etc...

Commonly KDE users might use Virtual desktops to separate these workspaces.

KDE Activities in Kubuntu provide a slick way to setup and configure environments specific to your task routines. For example you might want to have your email, and social networks configured as one activity. Perhaps your research, and writing for your thesis configured as another activity.



## Activities First Look



Let's take a look at the default KDE Activities configured in Kubuntu. Right Click anywhere on the empty desktop and choose "Activities" from the menu. The Activities side bar appears on the left, with the Default activity. Notice the + Create Activity at the bottom. Click that, and let's create a new "Social" Activity. Enter "Social" as the Activity name: and then click Create.

That's it you have created your first activity.

You can theme, and configure this new activity desktop in the same ways as mentioned early in this section of the manual.

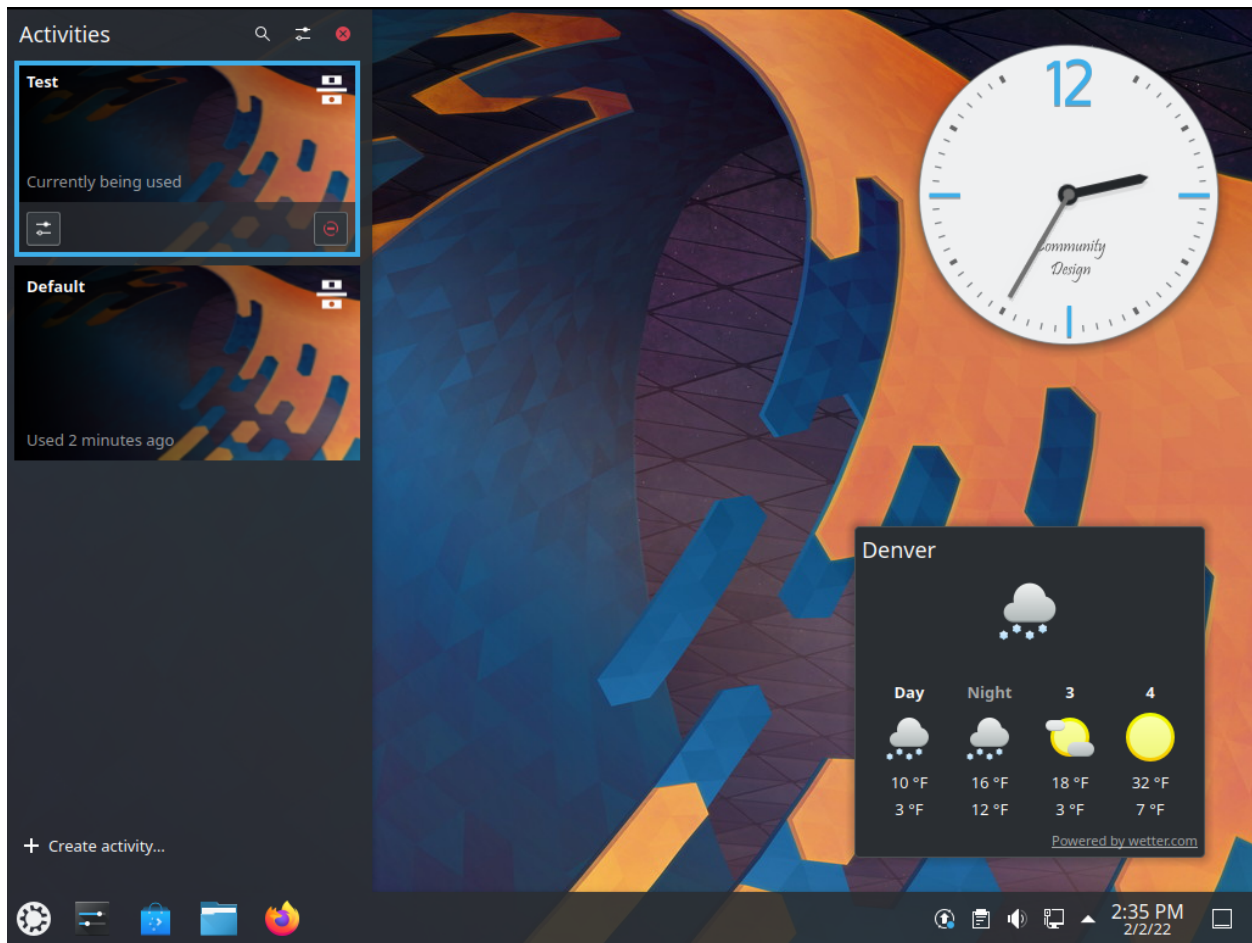
## A Step Further

OK, looking good, let's create another Activity. Call this one "Misc". Once created switch to this Activity, either by Right Click on the Desktop > Activities or use the Keyboard shortcut Alt+D,A ( Hold Alt down, press D, then Press A ) Then select the Misc Activity from the side bar.

OK, let's configure a few useful tools

1. Change the desktop wallpaper to something you like
2. Right-click > Add Widgets, and add the Analog Clock
3. Right-click > Add Widgets, and add the Weather Report

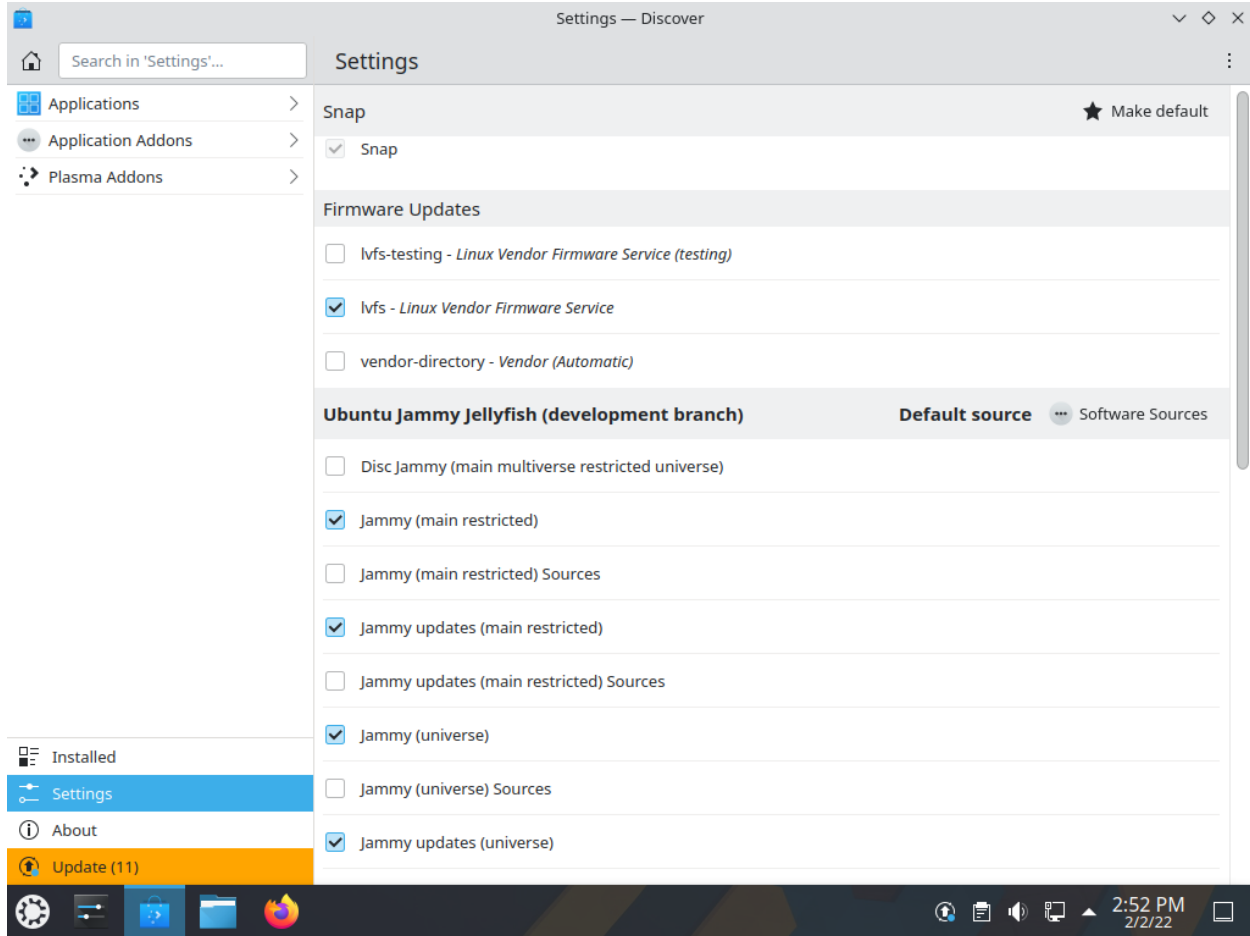
You can now resize these widgets and lay them out on the desktop however you wish. and configure them to suit your needs, as in the example below.



## Drivers

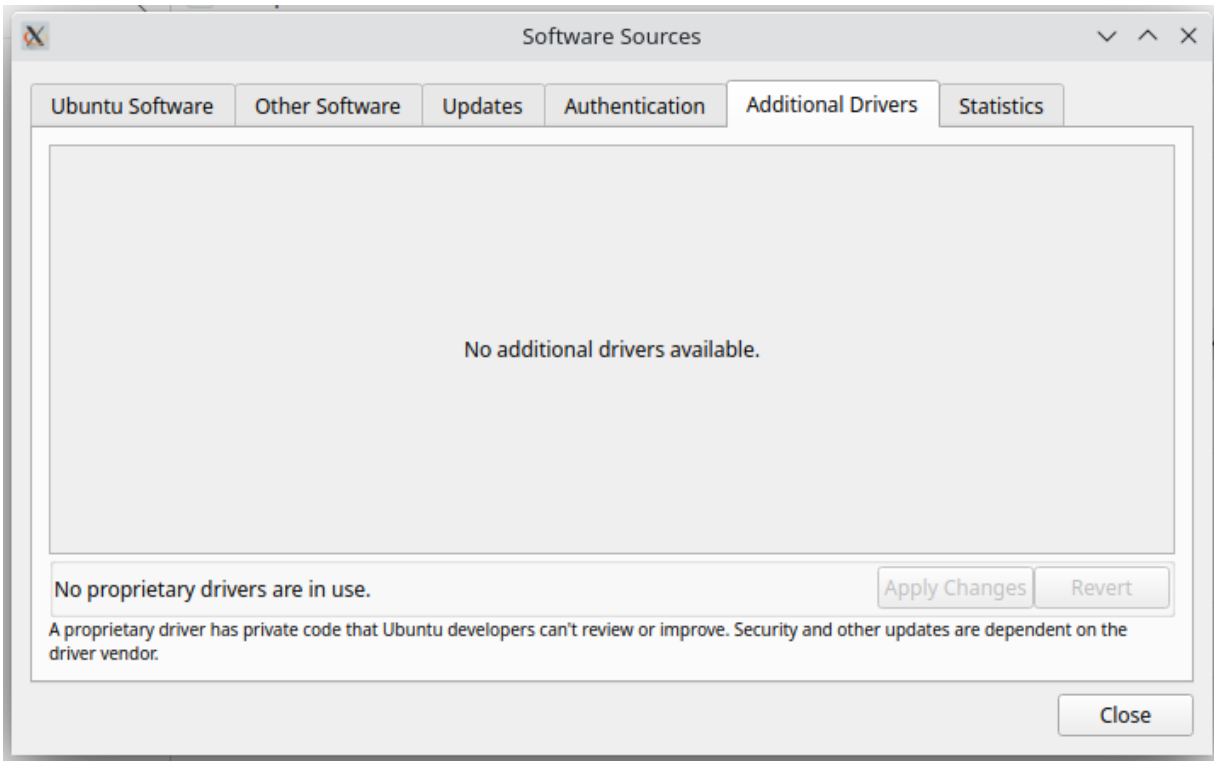
On every Operating System (Windows, macOS, and Linux) there are programs called Drivers which you install on your computer. These Drivers let your computer use new hardware or existing hardware, like [Wi-Fi](#). There Drivers also cover your graphics card e.g NVIDIA, AMD, sometimes the nonfree or restricted drivers let the cards perform better than the free ones. The 'Additional Drivers' section of Discover handles installing and uninstalling these for you. These improvements may cover gaming, video editing and processing to image editing.

1. Start Discover



2. Select Settings then left-click the 'Software Sources' button to the right of 'Ubuntu Jammy Jellyfish'
3. Enter your administrative password at the prompt
4. Left-click the 'Additional Drivers' tab





If there are any drivers (both Open Source and Closed Source) for your hardware they will be in this window. If you install any drivers you may need to restart your system for the change to take effect.

## 5.3 Software Management

Contents:

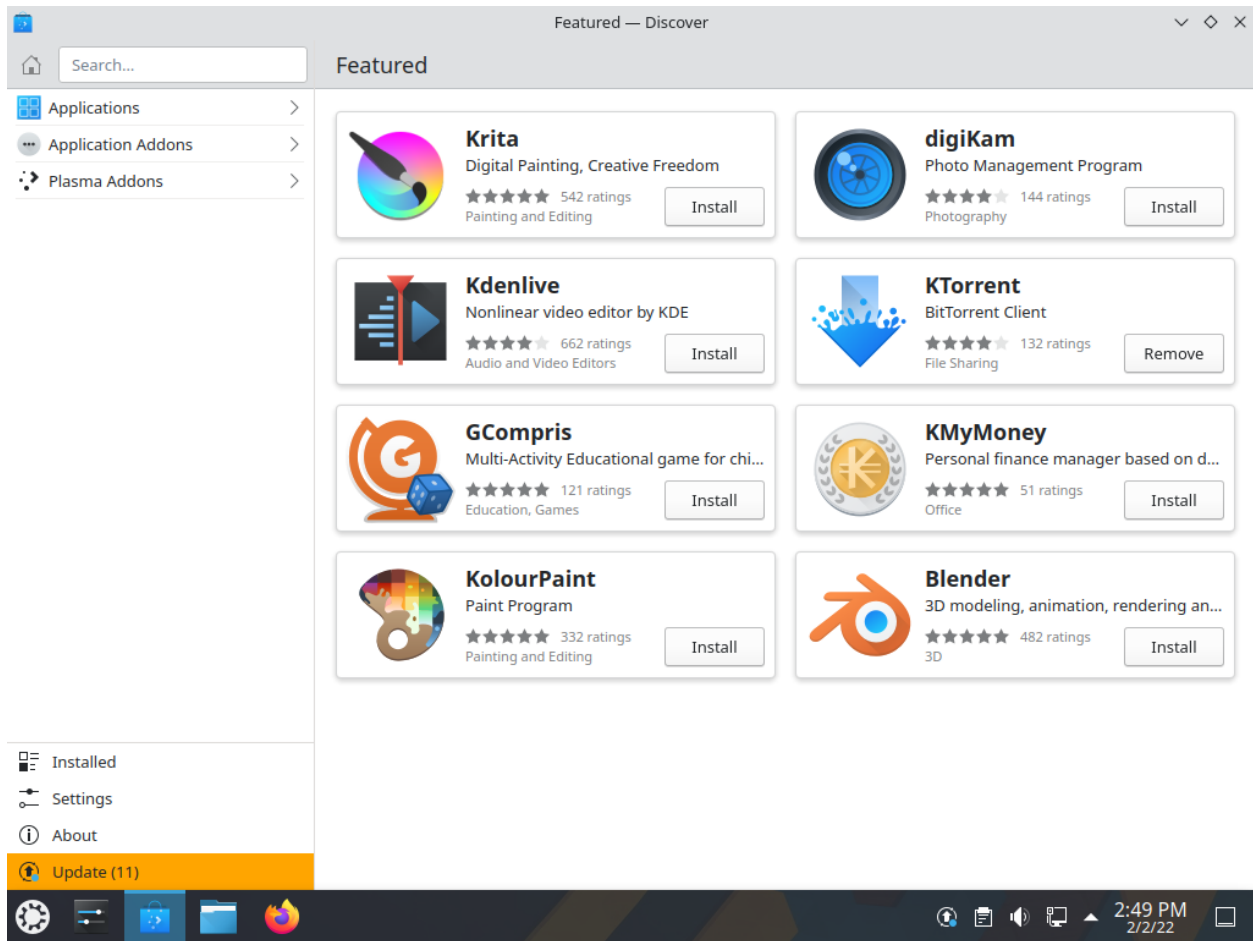
### 5.3.1 Software

#### Software Management

There are several ways to manage applications in Kubuntu. A convenient way to add or remove applications is with a package manager.

#### Graphical Clients

By default Kubuntu comes with a great package manager called Discover. Discover is an advanced program with a graphical user interface (GUI) for installing and removing applications. It will automatically notify you for updates (in the lower right hand corner), but you can use it at anytime to install new packages by opening your launcher or KRunner and type 'Discover' then select Discover from the results.



Discover might provide information about the required dependencies, these are other packages (software) that the piece of software that you want to install needs to run. Once this information is acknowledged, the required packages will begin downloading then be installed. When the installation process is complete, the software will be ready to use. It is rarely necessary to restart the system after software installation or updates. If it is, the system will warn you and give you a restart icon to do the restart at your convenience.

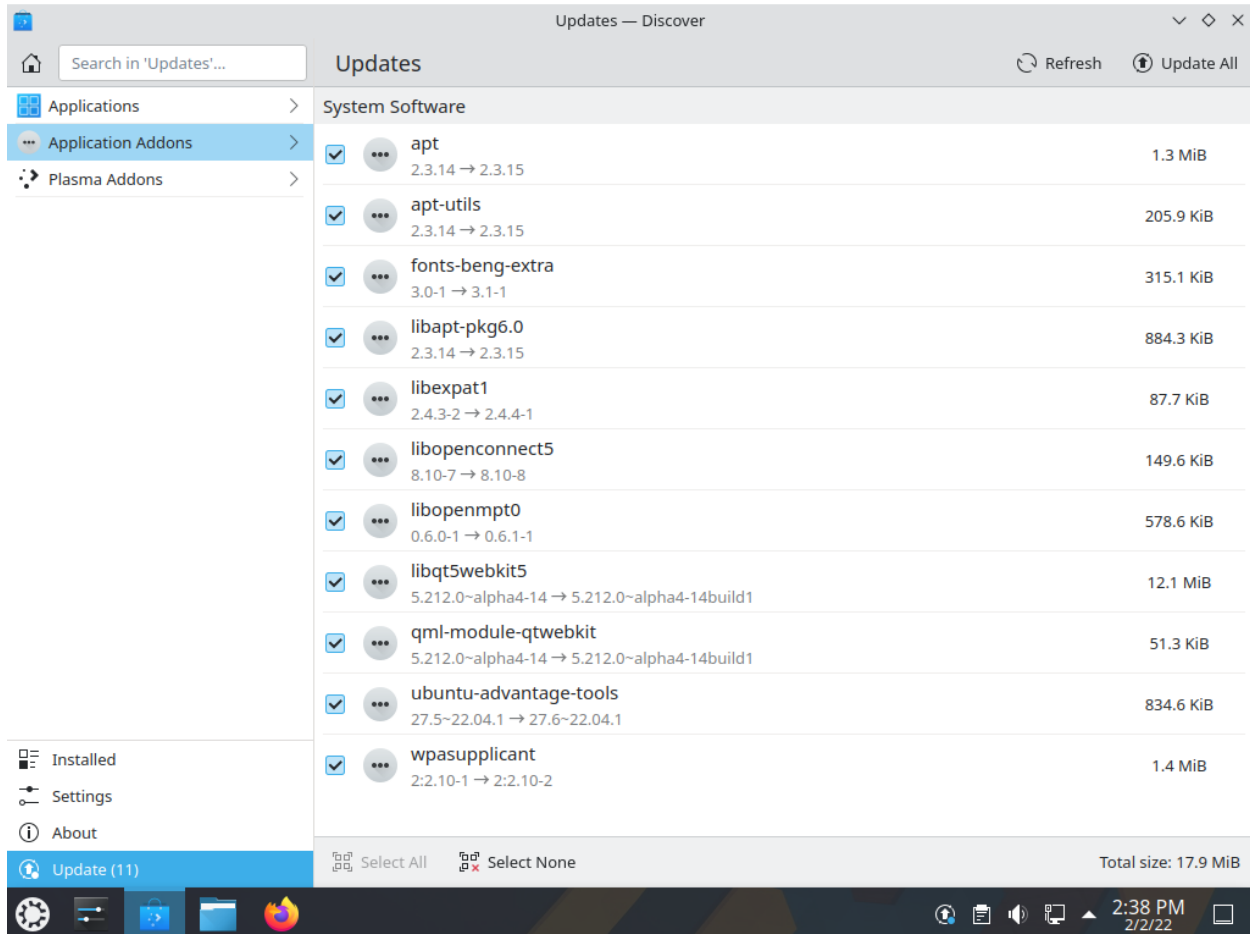
Discover also provides an easy method to remove software that is no longer needed.

**Tip:**

- Click on Installed and find the application you want to remove.
- Then click Remove and Discover will remove the application.

## Updating

Kubuntu developers release feature and security updates for applications and packages within the Kubuntu system. When updates become available, Kubuntu will display a message in the System Tray. To update the system, open Discover from either the Application Menu or Krunner and click the Update button (usually yellow/orange when there are updates). After installing some updates, it may be necessary to restart the computer. If so, Kubuntu will display a pop-up and an icon in the System Tray.



This is a short guide to the software which is included in your Kubuntu installation.

## Graphics

Some basic graphics applications are installed in Kubuntu by default, allowing you to create, view, scan, and manipulate images. The following applications are installed by default:

- **Okular** is a universal document viewer for many kinds of documents: PDF, Postscript, !DjVu, CHM, XPS, ePub and others.
- **LibreOffice Draw** is an all-purpose diagramming and charting tool which lets you produce anything from a quick sketch to a complex plan, and gives you the means to communicate with graphics and diagrams. With a maximum page size of 300cm by 300cm, Draw is an excellent package for producing technical drawings, general posters, and much else.
- **Skanslite** is a simple image scanning application.
- **Gwenview** is an image viewer with many features.

- [Kamoso](#) is a webcam recorder from the *KDE* community.
- [Spectacle](#) is the best at desktop screenshots, simple and sweet.

## Internet

### Browsers

Firefox is the default browser shipped with Kubuntu, the most popular open-source browser in the world. For more information on how to use Firefox see the [Firefox Help Page](#).

### Export your bookmarks

To export your bookmarks from Firefox

1. Click on the Bookmarks menu item
2. Select Show All Bookmarks or Ctrl+Shift+o
3. A new window will appear. Select Import and Backup

> Tip: Note where you save your bookmarks (by default in ~/yourfoldername)

### Import your bookmarks into Firefox

Click this link for a guide to [import your bookmarks](#) into Firefox.

## Email Clients

There are many options when it comes to email clients. In Kubuntu, Kmail is default email client, either as a stand-alone client or as part of the Kontact personal information manager (PIM). Kmail is the email component of Kontact, the *KDE* personal information manager (PIM). Kmail by itself is similar in functionality to other popular email programs, while Kontact is as full-featured as the fanciest personal information managers (PIMs), as it can be configured with calendars, address books, notes, an RSS reader, time tracking, journals and simple project planning. The following are just some of the features of Kmail:

- IMAP, POP3, SMTP support
- SSL, TLS, and Digest-md5 secure logon support
- PGP and GNUPG signatures and encryption support
- HTML reading, spam filtering, internal character sets, search and filter functions, spell checking, and robust searching. More information on Kmail can be found in the [KMail documentation](#).

## Chat Clients

Chatting with friends and family is a popular use of the internet, and Kubuntu provides the necessary applications.

- [Konversation](#) is the IRC (Internet Relay Chat) client pre-installed in Kubuntu. Not only does it provide functions similar to those of other popular IRC clients such as 'X-chat, its design emphasizes ease of use. Konversation includes tabbed browsing and notification of messages and other events.

*KDE* software connects you to the world. See [Internet, Networking, & Communication](#) for more.

## Multimedia

The best in multimedia is installed when you open your new Kubuntu installation. If you get an error message about “missing codecs” please install kubuntu-restricted-extras. You can find your Multimedia applications through Kickoff->Applications->Multimedia.

The following applications are installed by default:

- [Pulseaudio](#) keeps all your sound and video inputs and outputs working together. If you need to direct your audio or video output to other devices, install the pavucontrol package, launch it by pressing Alt + F2, then type pavucontrol.
- [K3b](#) is a simple, powerful and highly-configurable graphical optical disk burning application for audio, video, data projects.
- [Kmix](#) controls all your audio channels.
- [Elisa](#) is a music player focused on the Plasma desktop.
- [VLC](#) is a simple interface for playing your movies, TV shows, and music.

## Office

The default office suite installed in Kubuntu is LibreOffice. It includes Calc, Draw, Impress, Math, Base and Writer. This suite is the open source equivalent of the Microsoft Office suite and each application corresponds to a similar product in that line.

- Calc = Excel
- Writer = Word
- Impress = PowerPoint
- Base = Access

LibreOffice works well with the files created by their Microsoft counterparts, with the exception of Microsoft Access files. For more information see [LibreOffice](#).

## Personal Information Manager (PIM)

Installed with your system is the KDE Personal Information Manager Kontact. This includes many tools to manage your life.

- email
- contacts
- diary
- notes

- feeds
- to-do list

Please see [Kontact](#) for more details and help with this powerful set of tools.

## System Settings

Information on adjusting system settings can be found at [System Settings](#).

## Utilities

Your newly installed Kubuntu system has some utilities already installed. One of the most useful is not in your menus; just press ALT + F2. Look at the top of your screen; there is one of your most powerful utilities, called Krunner. See more here: [Krunner](#).

- [Kate](#) is the default text editor for KDE. It has many great features for editing plain text or writing code in many different languages.
- [Ark](#) is the default tool for handling archives of files such as tar, gzip, bzip2, zip, rar and 7z.
- [Klipper](#) is a clipboard to hold copied text for later use. Unlike other clipboards it will hold your entire copied text, rather than just one line.
- [Knotes](#) is a sticky-note application to post notes on your desktop.
- [KCalc](#) offers basic calculator functions and much more.
- [Konsole](#) is the KDE terminal emulator, it can be used to run console shells.
- [Dolphin](#) is the default file manager. Dolphin looks simple because of great design, while having many powerful features.

## Bash

Bash is the default shell in Konsole and other terminals. Click this [link](#) that goes over using the terminals

## Firewall configuration

Ufw is the default commandline configuration tool for the firewall. Ufw stands for Uncomplicated Firewall, it is developed to ease iptables firewall configuration. For more information about ufw see: [UFW](#)

## 5.3.2 Repositories

Thousands of programs are freely available to install in Kubuntu. These programs are stored in software archives (“repositories”) and are made available for installation over the Internet. Installing new programs in Kubuntu is quick, reliable, and secure because each program is built specifically for Kubuntu and is checked thoroughly before it is made available. Kubuntu repositories are categorized into four groups:

- Main
- Restricted
- Universe
- Multiverse

Two factors are used to determine categories

- The level of support provided for a program by its software development teams.
- The level of compliance the program has to the [Ubuntu Free Software Philosophy](#).

The standard Kubuntu LiveDVD contains some software from the “Main” and “Restricted” categories. Once a system has information about the Internet-based locations for these repositories, more programs are available for installation. Using the software package management tools installed by default, it is possible to discover, install, and update any piece of software directly over the internet without the need for the LiveDVD.

For more information about managing repositories, check the click on Repositories section of this manual. For even more information check the Ubuntu Wiki about [managing Repositories](#).

## PPAs (Personal Package Archive)

Personal Package Archives allow any person in the Ubuntu community who has committed to observe the [Ubuntu Code of Conduct](#) to upload Ubuntu source packages to be built and published as an apt repository by Launchpad. Software from Launchpad’s [Personal Package Archive](#) (PPA) requires a [GnuPG](#) (GPG) key so your system can verify that it’s getting the packages from the correct source and that the packages have not been interfered with since they were built. GnuPG is GNU’s tool for secure communication and data storage. For more information about PPAs, click on the Repositories section of this manual.

## Kubuntu Backports

The Kubuntu Backports are “Backports of new versions of KDE Platform, Plasma and Applications as well as major KDE apps for Kubuntu.” As any PPA you should know how to remove it before you add it so please do read below on how to do so. The Backports exist because of the Ubuntu release cycle, if there is a new Plasma, Applications or Frameworks after the freeze or release of a new Ubuntu release we package it up for you to enjoy.

<https://launchpad.net/~kubuntu-ppa/+archive/ubuntu/backports>

## Managing Personal Package Archives

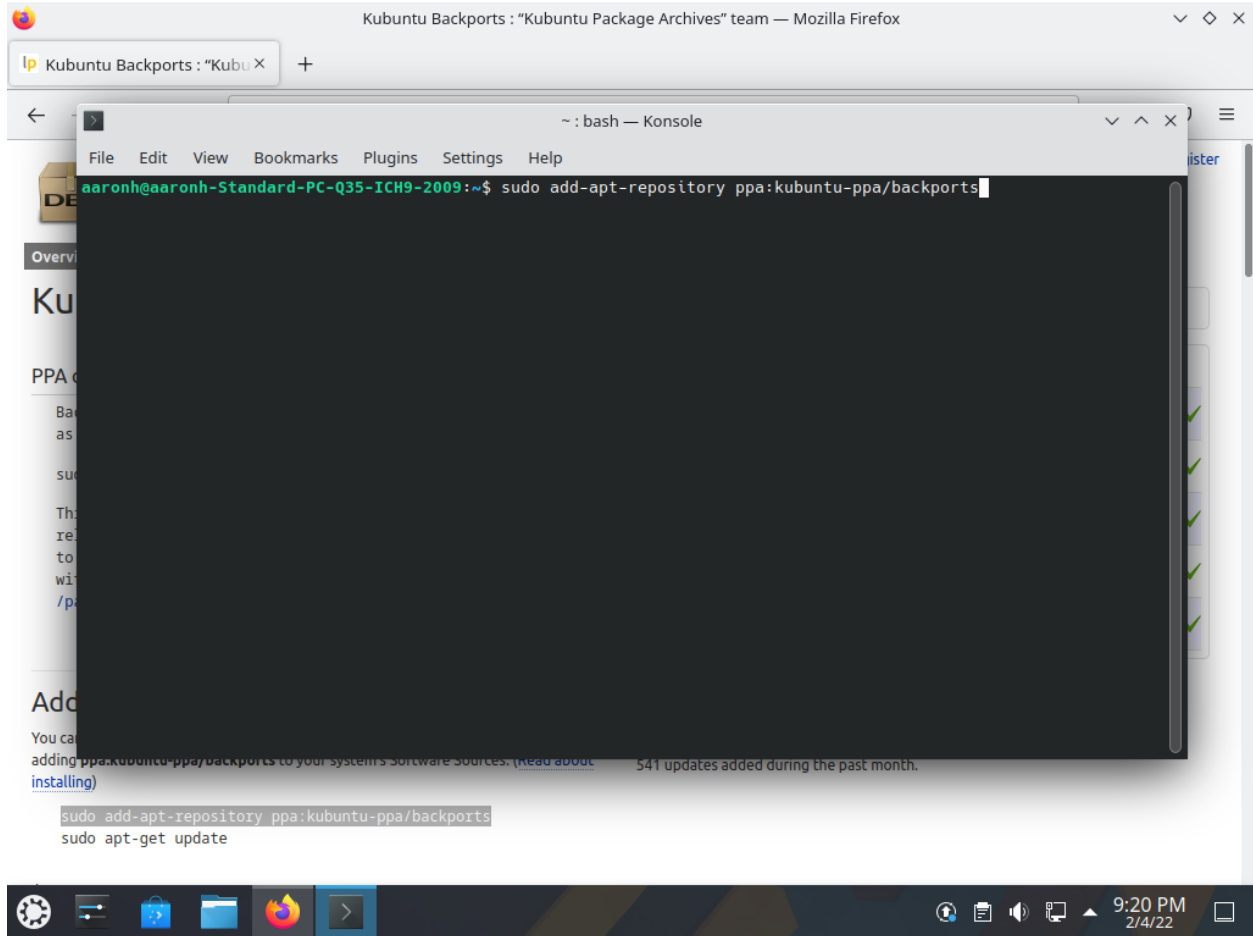
Personal Package Archives allow any person in the Ubuntu community who has committed to observe the [Ubuntu Code of Conduct](#) to upload Ubuntu source packages to be built and published as an apt repository by Launchpad. Software from Launchpad’s [Personal Package Archive](#) (PPA) requires a [GnuPG](#) (GPG) key so your system can verify that it’s getting the packages from the correct source and that the packages have not been interfered with since they were built. GnuPG is GNU’s tool for secure communication and data storage.

**Important:** The contents of Personal Package Archives are not checked or monitored. You install software from them at your own risk.

## Add a PPA

You can use the Discover to add a PPA:

1. Open the Launchpad PPA overview page in your browser for example look at the Kubuntu Backports PPA
2. Look for the ‘Adding this PPA to your system’ section
3. Open Konsole then copy (Ctrl+C once the command is highlighted)
4. Now paste (Ctrl+Shift+V in terminals like Konsole) and press the Enter key



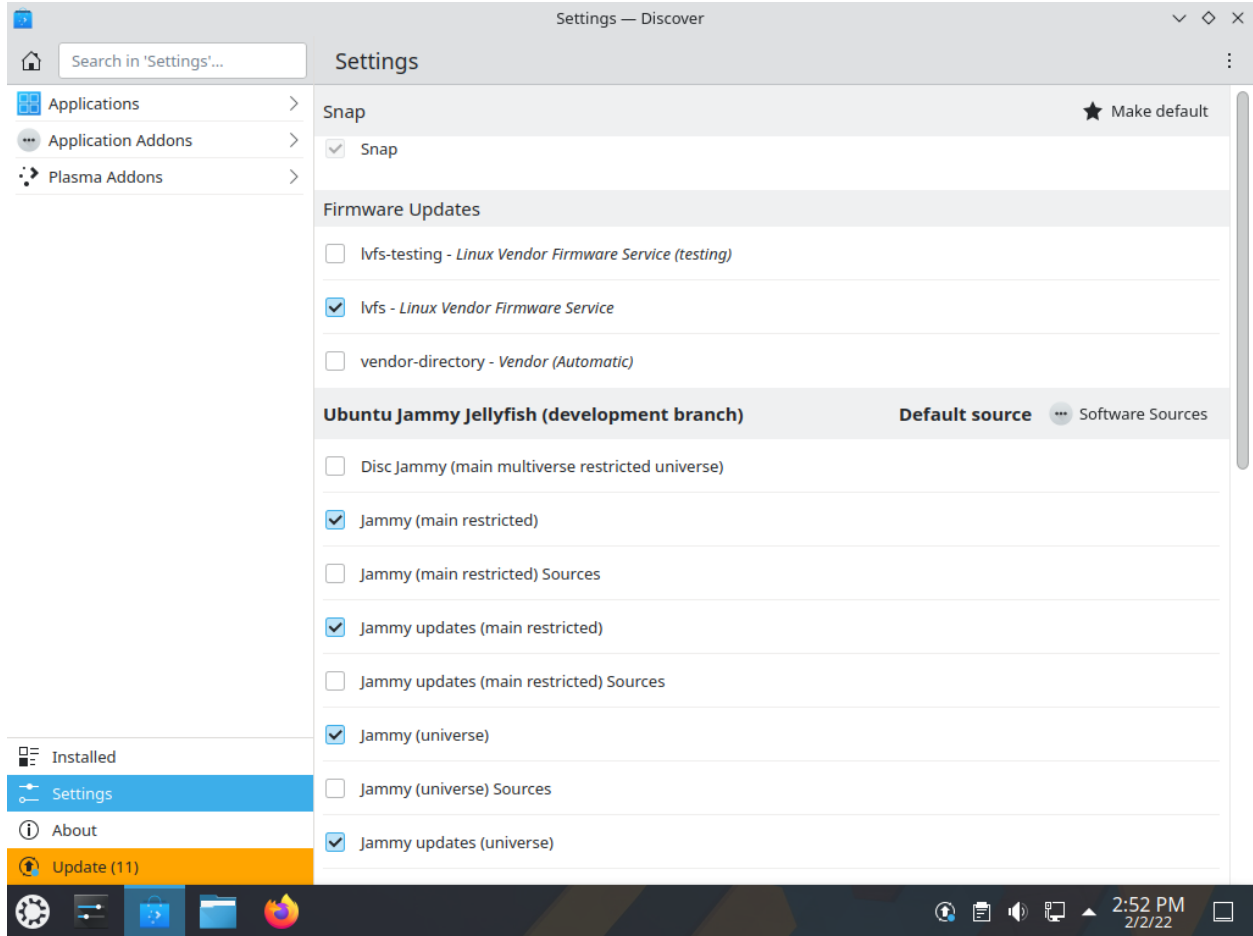
Your repositories will be updated and now Discover will be able to find the newly available software.

### Remove a PPA

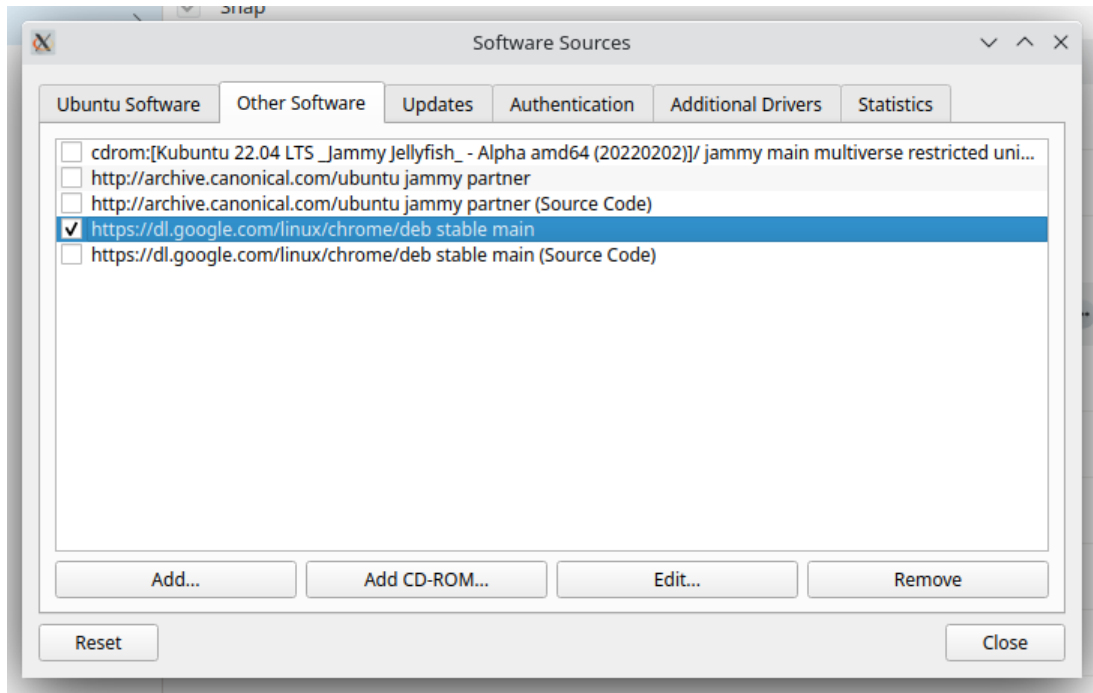
You can use the Discover to remove a PPA:

1. Open Discover then left-click Settings on the bottom left





2. Left-click the 'Software Sources' button to the right of 'Ubuntu Jammy Jellyfish'
3. Enter your administrative password at the prompt.
4. Left-click on the 'Other Software' tab



5. Left-click the PPA that you want to remove

6. Left-click the ‘Remove’ button

A prompt will appear to update the package list, Discover will now be allowed to find the newly available software.

### Install/Uninstall ‘.deb’ files

The package files associated with Kubuntu have the “.deb” suffix because of Kubuntu’s close relationship with the Debian GNU/Linux distribution. Individual “.deb” files can be downloaded and installed. Humble Bundles, for instance, distribute debs. Administrative privileges are required.

To install “.deb” files download the file from a safe and secure location. In this example we’ll be installing the Chrome “.deb” file from [Chrome’s website](#) then we’ll run these commands in a Konsole window:

```
sudo dpkg -i google-chrome-stable_current_amd64.deb
sudo apt install -f
```

## 5.4 Contribute

The Kubuntu community is made up of individuals and teams working to package software, test it, triage bugs, and then promote Kubuntu to a wider audience. All of the software, artwork, and documentation has been created, tested, used, and discussed openly by people around the world participating in the Open Source community made possible by the Internet. We invite you to help shape Kubuntu to better meet your needs.

### 5.4.1 Spreading the word

The easiest way to give back to the Kubuntu community is by sharing Kubuntu with others. Recommend Kubuntu to others, show them how to download and install it, and discuss the possibilities and qualities of Open Source Software with them. As our community grows, it becomes more vigorous and supported.

### 5.4.2 Giving support and getting it

Providing support is an awesome way to give back to the community because it is not required to have advanced skills or know everything about Linux or Kubuntu. You'll actually end up learning more as you help others, which increases your own knowledge and skills. This can be a gateway to learning other things, from bug triaging to packaging, and perhaps even to programming. Also, it is quite rewarding to fix the system of someone who is on the other side of the world!

You can give support and get it in the IRC channels, through the [Kubuntu Users Mailing List](#), or through the [Kubuntu Forums](#), [Ubuntu Forums](#), and [KDE Forums](#).

### 5.4.3 Subscribe

To begin using the mailing lists, please subscribe. Subscribing allows you to post a message without having it sit in an authorization queue, and allows you to receive messages from others who are also subscribed to the mailing list.

Before you send a message, check to see if the topic has been raised in the past. To do this, use Google to search the archives.

#### Kubuntu Users

- [Register](<https://lists.ubuntu.com/mailman/listinfo/kubuntu-users>)
- [Archive](<https://lists.ubuntu.com/archives/kubuntu-users>)

#### Kubuntu Development

- [Register](<https://lists.ubuntu.com/mailman/listinfo/kubuntu-devel>)
- [Archive](<https://lists.ubuntu.com/archives/kubuntu-devel>)

### 5.4.4 Kubuntu IRC Channels

**#kubuntu** The official Kubuntu Support channel

Connect to #kubuntu on the web here: [#kubuntu](#)

**#kubuntu-offtopic** For off-topic chatter with your fellow Kubuntu users

Connect to #kubuntu-offtopic on the web here: [#kubuntu-offtopic](#)

**#kubuntu-devel** This is the channel where the developers hang out

Connect to #kubuntu-devel on the web here: [#kubuntu-devel](#)

### 5.4.5 Bug Reporting

Filing good bugs is very important to improving the quality of Kubuntu. For information about filing bugs and writing useful bug reports, see [Bug Reporting](#).

For typical responses that you will likely get from upstream *KDE* developers, see [Bug Responses](#).

### 5.4.6 Local Teams

If you want to meet other Kubuntu users in your area, look for a Local Ubuntu Community team (LoCo team for short) to join.

- [LoCo portal](#)
- [LoCo Team List wiki](#)

### 5.4.7 Packaging and Development

Information about making packages and helping to [develop Kubuntu](#).

### 5.4.8 Documentation

Documentation is always needed for any project and Kubuntu is no different! It's very easy to reach out help with this project and it is hosted on Github [here](#). Feel free to open [Pull Requests](#) with your fix or open an [Issue](#) if you aren't there just yet!

### 5.4.9 Translations

Kubuntu welcomes all translators from all over the world. Translating Kubuntu helps usage by people who are more comfortable with their mother tongue. The required translations can be found here, [Kubuntu Translation](#).

### 5.4.10 Testing

Being a Kubuntu tester involves running bleeding-edge software, testing ISO's to see if they install correctly, and testing packages to confirm that a bug is fixed. If you want to help test Kubuntu, see [Kubuntu Testers](#).

### 5.4.11 Membership

Have you found your spot in our community? Why don't you go grab an awesome Ubuntu Membership! Just follow this [link](#)!

## 5.5 Support

### 5.5.1 Contact and Support

There are three ways to contact with the Kubuntu Project; mailing lists (email), Internet Relay Chat (IRC), and the forums.

#### Mailing Lists

Mailing lists are the Kubuntu Project's official communication tools. They allow for email discussion and have searchable archives.

**Subscribe:** To begin using the mailing lists, please subscribe. Subscribing allows you to post a message without having it sit in an authorization queue, and allows you to receive messages from others who are also subscribed to the mailing list.

Before you send a message, check to see if the topic has been raised in the past. To do this, use Google to search the archives.

Refer to the [Contribute Page](#) for more information about mailing lists.

#### Internet Relay Chat

IRC allows you to communicate in real-time with many others who are also using IRC and are on common networks and channels. For more information about IRC clients, see the [Chat Clients](#) section on the [Software Page](#). You can also use your browser to chat. To do so, go to the [Webchat](#) page.

Refer to the [Contribute Page](#) for more information about IRC Channels.

#### Forums

Kubuntu Forums are located [here](#).

#### Application Help

In most KDE applications there is a 'Help' button in the toolbar that will lead you to the handbook. For general KDE documentation, see [KDE Documentation](#) and [KDE Userbase Wiki](#).

### 5.5.2 Kubuntu Phone Support

If you or your organisation needs help with your computer systems running Kubuntu but you don't want to worry about the best IRC channel to ask in you can pay some money and phone up the office in England to get some help. They will use phone, e-mail, Google hangout, Skype, VNC and any other method you like to help diagnose the issue and resolve it for you.

[Click here for more information.](#)

## 5.6 Kubuntu Packagers Guide

Contents:

### 5.6.1 Welcome

The beauty of Open Source is that you are not limited to simply using the software in a predetermined way. You can choose how and what you do with it, and this includes copying and modifying the software that you use. This guide is designed to get you started on your journey in modifying Kubuntu, changing and contributing to make the software do the things that you want it ti.

This guide takes you on a step by step journey from getting set up with all the tools you need for software packaging. You are highly encouraged to support your exploration with the wider Kubuntu community, by joining the Kubuntu Developers mailing list

#### Kubuntu Developers Mailing List

- [Register](#)
- [Archive](#)

#### Kubuntu IRC Channels

Introduce yourself on Internet Relay Chat ( IRC )

**#kubuntu** The official Kubuntu Support channel

Connect to #kubuntu on the web here: [#kubuntu](#)

**#kubuntu-offtopic** For off-topic chatter with your fellow Kubuntu users

**#kubuntu-devel** This is the channel where the developers hang out

Packaging is fun, and there are many components to the Kubuntu development tool chain. You are not going to learn it all at once, and there will be many obstacles and challenges along the way. If you are a tinkerer, with a knack for fixing stuff, someone who likes to find out what goes on under the hood, and get excited by watching you machine follow you every utterance ?

You will find Kubuntu Packaging and development very exciting.

Ready to Get Started ?

### 5.6.2 Getting Started

#### 2. Getting Set Up

There are a number of things you need to do to get started developing for Kubuntu. This article is designed to get your computer set up so that you can start working with packages, and upload your packages to Kubuntu's hosting platform, Launchpad. Here's what we'll cover: Installing packaging-related software. This includes:

Kubuntu-specific packaging utilities

Encryption software so your work can be verified as being done by you Additional encryption software so you can securely transfer files Creating and configuring your account on Launchpad Setting up your development environment to help you do local builds of packages, interact with other developers, and propose your changes on Launchpad. Note

It is advisable to do packaging work using the current development version of Kubuntu. Doing so will allow you to test changes in the same environment where those changes will actually be applied and used. Don't worry though, you can use Testdrive or chroots to safely use the development release.

## 2.1. Install basic packaging software

There are a number of tools that will make your life as an Kubuntu developer much easier. You will encounter these tools later in this guide. To install most of the tools you will need run this command: `$ sudo apt-get install gnupg pbuilder ubuntu-dev-tools bzip-builddeb apt-file`

Note: Since Kubuntu 11.10 “Oneiric Ocelot” (or if you have Backports enabled on a currently supported release), the following command will install the above and other tools which are quite common in Kubuntu development: `$ sudo apt-get install packaging-dev`

This command will install the following software:

- **gnupg** – GNU Privacy Guard contains tools you will need to create a cryptographic key with which you will sign files you want to upload to Launchpad.
- **pbuilder** – a tool to do reproducible builds of a package in a clean and isolated environment.
- **ubuntu-dev-tools** (and **devscripts**, a direct dependency) – a collection of tools that make many packaging tasks easier.
- **bzip-builddeb** (and **bzip**, a dependency) – distributed version control with Bazaar, a new way of working with packages for Kubuntu that will make it easy for many developers to collaborate and work on the same code while keeping it trivial to merge each other's work.
- **apt-file** provides an easy way to find the binary package that contains a given file.

### 2.1.1. Create your GPG key

GPG stands for GNU Privacy Guard and it implements the OpenPGP standard which allows you to sign and encrypt messages and files. This is useful for a number of purposes. In our case it is important that you can sign files with your key so they can be identified as something that you worked on. If you upload a source package to Launchpad, it will only accept the package if it can absolutely determine who uploaded the package. To generate a new GPG key, run:

```
$ gpg --gen-key
```

GPG will first ask you which kind of key you want to generate. Choosing the default (RSA and DSA) is fine. Next it will ask you about the keysize. The default (currently 2048) is fine, but 4096 is more secure. Afterwards, it will ask you if you want it to expire the key at some stage. It is safe to say “0”, which means the key will never expire. The last questions will be about your name and email address. Just pick the ones you are going to use for Kubuntu development here, you can add additional email addresses later on. Adding a comment is not necessary. Then you will have to set a passphrase, choose a safe one (a passphrase is just a password which is allowed to include spaces). Now GPG will create a key for you, which can take a little bit of time; it needs random bytes, so if you give the system some work to do it will be just fine. Move the cursor around, type some paragraphs of random text, load some web page. Once this is done, you will get a message similar to this one:

```
pub 4096R/43CDE61D 2010-12-06
    Key fingerprint = 5C28 0144 FB08 91C0 2CF3 37AC 6F0B F90F 43CD E61D
uid Daniel Holbach <dh@mailempfang.de>
sub 4096R/51FBE68C 2010-12-06
```

In this case 43CDE61D is the key ID. Next, you need to upload the public part of your key to a keyserver so the world can identify messages and files as yours. To do so, enter:

```
$ gpg --send-keys --keyserver keyserver.ubuntu.com <KEY ID>
```

This will send your key to the Ubuntu keyserver, but a network of keyservers will automatically sync the key between themselves. Once this syncing is complete, your signed public key will be ready to verify your contributions around the world.

### 2.1.2. Create your SSH key

SSH stands for Secure Shell, and it is a protocol that allows you to exchange data in a secure way over a network. It is common to use SSH to access and open a shell on another computer, and to use it to securely transfer files. For our purposes, we will mainly be using SSH to securely upload source packages to Launchpad. To generate an SSH key, enter:

```
$ ssh-keygen -t rsa
```

The default file name usually makes sense, so you can just leave it as it is. For security purposes, it is highly recommended that you use a passphrase.

### 2.1.3. Set up pbuilder

pbuilder allows you to build packages locally on your machine. It serves a couple of purposes: The build will be done in a minimal and clean environment. This helps you make sure your builds succeed in a reproducible way, but without modifying your local system. There is no need to install all necessary build dependencies locally. You can set up multiple instances for various Kubuntu and Debian releases. Setting pbuilder up is very easy, run:

```
$ pbuilder-dist <release> create
```

where <release> is for example raring, saucy, trusty or in the case of Debian maybe sid. This will take a while as it will download all the necessary packages for a “minimal installation”. These will be cached though.

## 2.2. Get set up to work with Launchpad

With a basic local configuration in place, your next step will be to configure your system to work with Launchpad. This section will focus on the following topics: What Launchpad is and creating a Launchpad account. Uploading your GPG and SSH keys to Launchpad. Configuring Bazaar to work with Launchpad. Configuring Bash to work with Bazaar.

### 2.2.1. About Launchpad

Launchpad is the central piece of infrastructure we use in Kubuntu. It not only stores our packages and our code, but also things like translations, bug reports, and information about the people who work on Kubuntu and their team memberships. You will also use Launchpad to publish your proposed fixes, and get other Kubuntu developers to review and sponsor them. You will need to register with Launchpad and provide a minimal amount of information. This will allow you to download and upload code, submit bug reports, and more. Besides hosting Kubuntu, Launchpad can host any Free Software project. For more information see the Launchpad Help wiki.



### 2.2.2. Get a Launchpad account

If you don't already have a Launchpad account, you can easily create one. If you have a Launchpad account but cannot remember your Launchpad id, you can find this out by going to <https://launchpad.net/~> and looking for the part after the ~ in the URL. Launchpad's registration process will ask you to choose a display name. It is encouraged for you to use your real name here so that your Kubuntu developer colleagues will be able to get to know you better. When you register a new account, Launchpad will send you an email with a link you need to open in your browser in order to verify your email address. If you don't receive it, check in your spam folder. The new account help page on Launchpad has more information about the process and additional settings you can change.

### 2.2.3. Upload your GPG key to Launchpad

First, you will need to get your fingerprint and key ID. To find about your GPG fingerprint, run:

```
$ gpg --fingerprint email@address.com
```

and it will print out something like:

```
pub  4096R/43CDE61D 2010-12-06
     Key fingerprint = 5C28 0144 FB08 91C0 2CF3  37AC 6F0B F90F 43CD E61D
uid  Daniel Holbach <dh@mailempfang.de>
sub  4096R/51FBE68C 2010-12-06
```

Then run this command to submit your key to Ubuntu keyserver:

```
$ gpg --keyserver keyserver.ubuntu.com --send-keys 43CDE61D
```

where 43CDE61D should be replaced by your key ID (which is in the first line of output of the previous command). Now you can import your key to Launchpad.

Head to <https://launchpad.net/~/+editpgpkeys> and copy the “Key fingerprint” into the text box.

In the case above this would be 5C28 0144 FB08 91C0 2CF3 37AC 6F0B F90F 43CD E61D. Now click on “Import Key”.

Launchpad will use the fingerprint to check the Ubuntu key server for your key and, if successful, send you an encrypted email asking you to confirm the key import. Check your email account and read the email that Launchpad sent you. If your email client supports OpenPGP encryption, it will prompt you for the password you chose for the key when GPG generated it. Enter the password, then click the link to confirm that the key is yours. Launchpad encrypts the email, using your public key, so that it can be sure that the key is yours. If you are using Thunderbird, the default Ubuntu email client, you can install the Enigmail plugin to easily decrypt the message. If your email software does not support OpenPGP encryption, copy the encrypted email's contents, type gpg in your terminal, then paste the email contents into your terminal window. Back on the Launchpad website, use the Confirm button and Launchpad will complete the import of your OpenPGP key.

Find more information at <https://help.launchpad.net/YourAccount/ImportingYourPGPKey>

### 2.2.4. Upload your SSH key to Launchpad

Open <https://launchpad.net/~/+editsshkeys> in a web browser, also open `~/.ssh/id_rsa.pub` in a text editor. This is the public part of your SSH key, so it is safe to share it with Launchpad. Copy the contents of the file and paste them into the text box on the web page that says “Add an SSH key”. Now click “Import Public Key”. For more information on this process, visit the creating an SSH keypair page on Launchpad.

### 2.2.5. Configure Bazaar

Bazaar is the tool we use to store code changes in a logical way, to exchange proposed changes and merge them, even if development is done concurrently. It is used for the new Kubuntu Distributed Development method of working with Kubuntu packages. To tell Bazaar who you are, simply run:

```
$ bazaar whoami "Bob Dobbs <subgenius@example.com>"
$ bazaar launchpad-login subgenius
```

whoami will tell Bazaar which name and email address it should use for your commit messages. With launchpad-login you set your Launchpad ID. This way code that you publish in Launchpad will be associated with you. Note: If you can not remember the ID, go to <https://launchpad.net/~> and see where it redirects you. The part after the “~” in the URL is your Launchpad ID.)

### 2.2.6. Configure your shell

Similar to Bazaar, the Debian/Kubuntu packaging tools need to learn about you as well. Simply open your `~/.bashrc` in a text editor and add something like this to the bottom of it:

```
export DEBFULLNAME="Bob Dobbs"
export DEBEMAIL="subgenius@example.com"
```

Now save the file and either restart your terminal or run:

```
$ source ~/.bashrc
```

(If you do not use the default shell, which is bash, please edit the configuration file for that shell accordingly.)

## 5.7 Appendix

Contents:

### 5.7.1 References

Kubuntu packaging involves the use of many other tools.

## Kubuntu CI

The Kubuntu Continuous Integrations ( CI ) system relies upon the use of the Jenkins CI tool

<https://jenkins.org>

## Debian Packages

Debian software packaging is a tried and tested method of packaging software source code and binaries for inclusion in Linux distributions

Of particular interests to the Kubuntu Packager should be the Debian Policy

<https://debian.org>



## INDICES AND TABLES

- `genindex`
- `modindex`
- `search`